

MEET OUR SPECIALISTS

UW Medicine is a pioneer in the field of neonatology. For more than 50 years, we have been delivering the highest level of care to infants born prematurely and/or with physical and genetic anomalies. Our neonatologists bring extensive experience and great compassion in caring for not only the smallest infants but families blessed with multiples. Our neonatal intensive care units (NICUs) have access to the most advanced neonatal research and continue to be instrumental in setting the standard for reducing risk of brain damage and lung problems in premature babies across the nation. Our Level III and IV NICUs are located at Valley Medical Center and University of Washington Medical Center.



MANEESH BATRA, M.D., M.P.H.

*Associate Professor of Pediatrics
Associate Director, Pediatric Residency Program*

Clinical Interests: Newborn health, survival and long-term outcomes in developed and developing country settings.



ZEENIA BILLIMORIA, M.D.

Assistant Professor of Pediatrics

Clinical Interests: Providing care to critically ill, high risk newborns as part of a multidisciplinary team. Providing support to families of these infants, in an unfamiliar environment, through family-centered rounds.



SHILPI CHABRA, M.D.

Associate Professor of Pediatrics

Clinical Interests: Gastroschisis management guideline development and outcomes, quality improvement projects such as effects of standardized feeding guidelines on growth outcomes in preterm infants in the NICU.



CYRIL ENGMANN, M.D. FAAP

*Clinical Professor of Pediatrics
Departments of Global Health, & Public Health*

Clinical Interests: Maternal, newborn and child survival, nutrition and early childhood development in low- and high-income settings.



MEGAN GRAY, M.D.

*Assistant Professor of Pediatrics
Associate Director, Neonatal-Perinatal Medicine
Fellowship Training Program*

Clinical Interests: Optimizing growth and healing for all infants in the NICU, maximizing the breastfeeding experience, and preserving early family bonding.



SARAH HANDLEY, M.D.

Clinical Assistant Professor of Pediatrics

Clinical Interests: Extracorporeal membrane oxygenation (ECMO) in the neonate and management of the chronically ill/surgical neonate.



ANNA HEDSTROM, M.D.

Assistant Professor of Pediatrics

Clinical Interests: Interdisciplinary, family- focused neonatal intensive care and investigation of targeting respiratory support to a newborn's specific needs.



MELINDA HENDRICKSON, M.D.

Clinical Associate Professor of Pediatrics

Clinical Interests: Reduced ventilator-induced lung injury with application of non-invasive ventilation methods in the preterm infant and better growth and neurodevelopmental outcomes of NICU babies with improved nutritional practices.



SANDRA JUUL, M.D., Ph.D.

*Professor of Pediatrics
W. Alan Hodson Endowed Chair in Pediatrics
Division Head, Neonatology*

Clinical Interests: Optimizing care for the critically ill newborn, implementing neuroprotective approaches to care.

To transfer a patient, call our Transport Communications Center **206.987.8899**.

(over)

**CHRISTINA LONG, D.O.**

*Clinical Associate Professor of Pediatrics
Medical Director, NICU, Valley Medical Center*

Clinical Interests: Providing care to critically ill, high risk newborns as part of a multidisciplinary team, neonatal ethics, quality improvement, improving safety, and medical education.

**DAVID LOREN, M.D.**

*Associate Professor of Pediatrics
Associate Medical Director, NICU,
UW Medical Center*

Clinical Interests: Innovating family-centered strategies for developing comprehensive multidisciplinary care plans in the NICU.

**DENNIS MAYOCK, M.D.**

*Professor of Pediatrics
Associate Division Head, Scholarship and Research*

Clinical Interests: Evaluation of therapies that may potentially improve the neurodevelopmental outcomes of preterm and term infants. Foster interest in neonatal trainees in clinical research project design, management and completion.

**MICHAEL NEUFELD, M.D., M.P.H.**

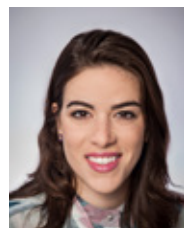
Clinical Associate Professor of Pediatrics

Clinical Interests: Long-term neurodevelopmental outcomes of premature infants, quality improvement, patient safety, eliminating nosocomial infections, and medical education.

**PRATIK PARIKH, M.D.**

Assistant Professor of Pediatrics

Clinical Interests: Providing comprehensive and evidence-based care for critically ill newborn infants. Special interest in neonatal neuroprotection and improving neurodevelopmental outcome.

**KRYSTLE PEREZ, M.D., M.P.H.**

Assistant Professor of Pediatrics

Clinical Interests: Providing evidence-based care for critically ill newborns, improving neonatal care and outcomes in developed and developing countries, and medical education.

**TAYLOR SAWYER, D.O., M.ED.**

*Associate Professor of Pediatrics
Director, Neonatal-Perinatal Medicine Fellowship
Training Program*

Clinical Interests: Promoting the highest quality neonatal care through the use of evidence-based medicine and innovative learning methodologies, including medical simulation, with the goal to optimize patient outcomes.

**THOMAS STRANDJORD, M.D.**

*Clinical Associate Professor of Pediatrics, Associate
Division Head, Evidence-based Education
Medical Director, NICU, UW Medical Center*

Clinical Interests: Improving outcomes of premature infants, with particular interest in delivery room resuscitation.

**CHRISTOPHER TRAUDT, M.D.**

Assistant Professor of Pediatrics

Clinical Interests: Application of family-centered care in the NICU: The NICU can be very intimidating to parents and care of the infant is incomplete without parental guidance throughout the NICU stay.

**RACHEL UMOREN, M.D., M.S.**

Assistant Professor of Pediatrics

Clinical Interests: Education and family support for parents with infants in the NICU.

**LINDA WALLEN, M.D.**

*Professor of Pediatrics
Associate Division Head, Clinical Operations*

Clinical Interests: Evidence-based practice as the cornerstone of clinical practice and establishing guidelines for management of common neonatal problems.

**ELLIOTT WEISS, M.D., M.S.M.E.**

*Assistant Professor of Pediatrics
Assistant Professor, Division of Bioethics*

Clinical Interests: Providing care to critically ill, high risk newborns; neonatal extracorporeal life support (ECLS); supporting parental decision-making; improving long-term neurodevelopmental outcomes.

Patient Care Locations

**University of Washington Medical Center
Level IV Neonatal Intensive Care Unit
1959 N.E. Pacific Street, Seattle, WA 98195
206.598.4606**

**Valley Medical Center
Level III Neonatal Intensive Care Unit
400 S. 43rd Street, Renton, WA 98055
425.228.3440, ext. 5791**