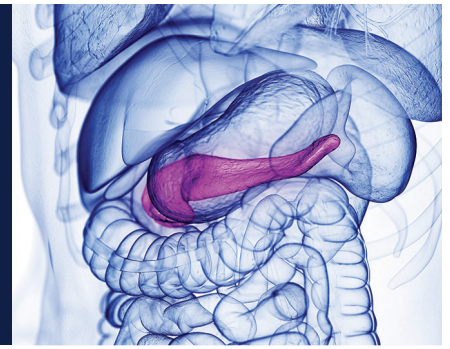


Total Pancreatectomy and Islet Auto-Transplant Clinic

www.ucsfhealth.org/autoislet



UCSF is one of the few academic medical centers in the United States to offer islet auto-transplantation to minimize diabetes after total pancreatectomy.



80+

Auto-islet processings and infusions performed at UCSF since 2006



Reliance on opioid medication, post-procedure*

No longer needed

~70%

Substantially decreased need

~95%



Insulin independence rate, post-procedure†

1 year

38%

5 years

27%

*UCSF Medical Center patient data.

†Wilson GC, Sutton JM, Abbott DE, et al. Long-term outcomes after total pancreatectomy and islet cell autotransplantation: is it a durable operation? *Ann Surg.* 2014;260(4):659-667.

PATIENT OUTCOMES

- Chronic pancreatitis is characterized by severe pain that can limit a patient's quality of life.
 - Pain management can be challenging.
 - Patients are often too disabled to work.
 - Severely ill patients have traditionally been treated by removing part or all of the pancreas, but this can leave them diabetic and reliant on external sources of insulin.
- A total pancreatectomy followed by an islet auto-transplant (TP-IAT) is a safe and effective approach for treating chronic pancreatitis in patients with severe disease.
 - The diseased pancreas is surgically removed.
 - Functioning islet cells are harvested from the removed pancreas and infused into the portal vein, where they migrate to the liver.
 - The patient's own islets are used, which eliminates the risk of tissue rejection.
 - The patient's ability to secrete insulin is preserved, reducing the risk of surgically induced diabetes.
 - Most UCSF patients (an estimated 60 percent of adults and 80 percent of children) eventually become insulin independent following the procedure.*

COMPREHENSIVE CARE

- Experienced and globally recognized multidisciplinary team, including surgeons, endocrinologists, gastroenterologists, interventional radiologists, pain management specialists, nurse practitioners, pancreas/islet processing specialists, financial counselors, dietitians and social workers
- Skilled in procedures for both pediatric and adult patients

*Individual results vary and depend on disease severity.

[MORE →](#)

INFORMATION / REFERRALS

■ PHONE (415) 353-1473 ■ FAX (415) 353-8709

UCSF Health

WHEN TO REFER

- The procedure is appropriate for highly motivated patients with a strong social support structure who no longer respond to conservative interventional methods. It may be performed on patients with the following conditions:
 - Chronic pancreatitis
 - Relapsing acute pancreatitis
 - Hereditary pancreatitis
- Patients are evaluated on an individual basis, and even patients who have diabetes can benefit from the pain relief provided by the procedure.

WHY REFER TO UCSF?

- One of the few medical centers in the country to offer islet auto-transplantation
- Experienced team of specialists offering the procedure for patients of all ages
- Multidisciplinary conferences to review cases and select patients appropriate for the procedure
- Willing to consider complex patients who have had previous surgeries
- Close communication with referring physicians before and after the procedure
- Food and Drug Administration (FDA)-registered clean room for islet processing
- Superior islet yields*
- Early adopters of new technologies such as multimodal pain control methods
- Leaders in educating other providers on procedure techniques
- Available to work with patients to help navigate access to third-party payers
- UCSF Benioff Children's Hospital San Francisco designated a National Pancreatitis Center by the National Pancreas Foundation
- Members of leading scientific associations pertaining to islet auto-transplantation:
 - Collaborative Islet Transplant Registry (CITR)
 - Clinical Islet Transplantation (CIT) Consortium

*Individual results vary and depend on disease severity.

OUR TEAM

Mustafa Arain, MD
Gastroenterologist

Umesh Masharani, MBBS
Endocrinologist

James Ostroff, MD
Gastroenterologist

Andrew Posselt, MD, PhD
Transplant surgeon

Takoui Kechedjian
Islet auto-transplant coordinator

Gregory L. Szot, MS
Core Manager, UCSF Islet and Cellular Production Facility

Giulia Worner, NP
Nurse practitioner