

# ATLANTIC REGIONAL HEMATOPATHOLOGY MEETING



Future Directions of Hematopathology

SATURDAY, MAY 20, 2023 | 8:00 AM – 3 PM

PROGRAM

## KEYNOTE SPEAKERS

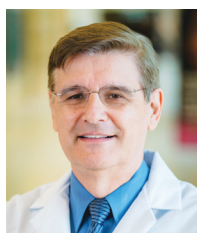


### L. Jeffrey Medeiros, MD

L. Jeffrey Medeiros, MD, is a Professor and Chair of the Department of Hematopathology at The University of Texas, MD Anderson Cancer Center, Houston, Texas. Dr. Medeiros received his MD from the University of Massachusetts and did an anatomic and clinical pathology residency at the New England Deaconess Hospital in Boston (now Beth Israel Deaconess Medical Center). He completed four years of fellowship training: two years at Stanford University Medical Center (Surgical Pathology and Immunopathology), one year at Massachusetts General Hospital (Hematopathology), and one year at the National Cancer Institute (Hematopathology).

A renowned clinician and researcher, Dr. Medeiros's interests include diagnosing lymphomas using histologic, immunophenotypic, and molecular methods for diagnosis and prognosis. His recent research interests have focused on exploring the characteristics of diffuse aggressive B-cell lymphomas.

Dr. Medeiros is actively involved in peer-reviewed literature and is on the editorial boards of the *American Journal of Surgical Pathology*, *Human Pathology*, *Modern Pathology*, and *Pathology*. He is an Associate Editor of *Modern Pathology* and a co-author of four books.



### Mariusz A. Wasik, MD

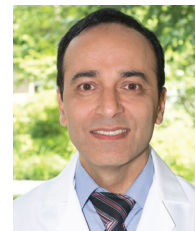
Mariusz A. Wasik, MD, is a Professor and Chair of the Department of Pathology at Fox Chase Cancer Center. Dr. Wasik graduated from Wroclaw Medical University in Poland and completed fellowships in immunology at Harvard, a residency in pathology at Boston University, and a fellowship in hematopathology at Beth Israel

Hospital/Harvard. He was on the faculty at the University of Pennsylvania, most recently as Professor and Director of the Center of Excellence in Lymphoma Research. Dr. Wasik was appointed Chair of the Fox Chase Department of Pathology and holds the Morel-Bayster Endowed Chair.

His research focuses primarily on aberrant cell signaling, the underlying genetic and epigenetic mechanisms in lymphomas, the development of new diagnostic and monitoring tools, and the identification of novel treatment approaches based on the unique biology of malignant cells.

Dr. Wasik has authored more than 220 reports in such journals as *Nature Medicine*, and *Proceedings of the National Academy of Sciences*, *Blood*, and *Cancer Research*. Dr. Wasik frequently serves as a member and often as chair of NIH grant reviews for individual, program project, and SPORE grants.

## PROGRAM DIRECTOR



### Reza Nejati, MD

Associate Professor,  
Department of Pathology  
Medical Director of Clinical Laboratories  
Director, Flow Cytometry Lab  
Fox Chase Cancer Center

## PLANNING COMMITTEE MEMBERS

### Mariusz Wasik, MD

Professor & Chair,  
Department of Pathology  
Associate Director of Cancer Center  
DE&S Morel, S&S Bayster Chair  
in Molecular Diagnostics  
Fox Chase Cancer Center

### Henry C. Fung, MD, FACP, FRCPE

Professor & Chair, Department  
of Bone Marrow Transplant and  
Cellular Therapies  
Fox Chase Cancer Center

### Nicholas Mackrides, MD

Assistant Professor,  
Department of Pathology  
Fox Chase Cancer Center

### Tahseen I. Al-Saleem, MD

Professor Emeritus,  
Department of Pathology  
Fox Chase Cancer Center

# AGENDA

**8:00–8:45 AM REGISTRATION & BREAKFAST**

---

**8:45–8:50 AM WELCOME:** Reza Nejati, MD, Program Director, Fox Chase Cancer Center

---

**8:50–9:20 AM KEYNOTE ADDRESS:** *Identification of Lymphoma Cell Reprogramming: The New Diagnostic Frontier*  
Mariusz Wasik, MD, Fox Chase Cancer Center

---

**9:20–10:35 AM CASE REVIEW: Leukemias**

- CHAIRS** John Kim Choi, MD, The University of Alabama at Birmingham & Siddharth Bhattacharyya, MD, University of Pennsylvania Perelman School of Medicine
- CASE 1** Katie Morgan, MD, PhD, Rutgers–Robert Wood Johnson University Hospital – *T/B Mixed Phenotype Acute Leukemia with PICALM:MLLT10 Fusion and 5q Deletion*
- CASE 2** Haluk Kavus, MD, Geisinger Medical Center – *Chronic Myelomonocytic Leukemia with an Acute Leukemia Progression and Pathogenic CEBPA (non-bzip) Variants: An Area of Divergence between ICC and WHO Classification Systems*
- CASE 3** Nicholas Mackrides, MD, Fox Chase Cancer Center – *Progressive Anemia Unresponsive to MDS Treatment*
- CASE 4** Peter Abdelmessieh, MD, Fox Chase Cancer Center – *The Importance of Molecular Testing in Treating Patients with Myeloid Neoplasms*
- CASE 5** Patricia M. Kim, MD, Penn State Hershey Medical Center – *Leukemic MCD/C5 Diffuse Large B-Cell Lymphoma*
- 

**10:35–10:40 AM POSTER INTRODUCTIONS:** Reza Nejati, MD, Fox Chase Cancer Center

---

**10:40–11:10 AM BREAK, POSTERS & EXHIBITS**

---

**11:10–12:25 AM CASE REVIEW: Lymphomas**

- CHAIRS** L. Jeffrey Medeiros, MD, MD Anderson Cancer Center & Reza Nejati, MD, Fox Chase Cancer Center
- CASE 6** Jiejing Yin, MD, Temple Health – *ALK-Positive Large B-Cell Lymphoma with Multiple Epithelial Antigen Expression and PABPC1:ALK Fusion, a Novel Molecular Alteration*
- CASE 7** Jagmohan S. Sidhu, MD, United Health Services Hospitals – *Composite Classic Hodgkin Lymphoma–Primary Mediastinal Large B-Cell Lymphoma: A Case of B-Cell Plasticity and Clonal Relationship*
- CASE 8** Jalil Nasibli, MD, Fox Chase Cancer Center – *New Lymphadenopathy in an 80-year-old Male with a History of Follicular Lymphoma*
- CASE 9** Siddharth Bhattacharyya, MD, Perelman School of Medicine at the University of Pennsylvania – *Transdifferentiation of Follicular Lymphoma to Langerhans Cell Histiocytosis and Langerhans Cell Sarcoma*
- CASE 10** Shazia Nakhoda, MD & Y. Lynn Wang, MD, PhD, FCAP, Fox Chase Cancer Center – *From Bench to Bedside: Correlating Ex Vivo Drug Sensitivity to Clinical Outcomes in a Patient with Relapsed/Refractory Chronic Lymphocytic Leukemia*
- 

**12:25–1:10 PM LUNCH, POSTERS & EXHIBITS**

---

**1:10–1:55 PM KEYNOTE ADDRESS:** *Diffuse Large B-cell Lymphoma—An Update*  
L. Jeffrey Medeiros, MD, MD Anderson Cancer Center

---

**1:55–2:55 PM CASE REVIEW: New Technologies**

- CHAIRS** Nicholas Mackrides, MD, Fox Chase Cancer Center & Vinodh Pillai, MD, PhD, The Children's Hospital of Philadelphia
- CASE 11** Brian Lockhart, BS, The Children's Hospital of Philadelphia – *Transcriptomics to Distinguish Between Patterns and Etiologies of Reactive Lymphadenitis*
- CASE 12** John Kim Choi, MD, The University of Alabama at Birmingham – *Rare Case of Kappa Subset and Lambda Subset Biclonal Multiple Myeloma Detected Using Spectral Flow Cytometry*
- CASE 13** Julia Wang, MD, PhD, Hospital of the University of Pennsylvania – *Single-Cell RNA Sequencing and High-Plex Imaging of Rosai-Dorfman Disease and Autoimmune Lymphoproliferative Syndrome*
- CASE 14** Asya Varshavsky-Yanovsky, MD, PhD, Fox Chase Cancer Center – *Landscape of Recurrent Cytogenetic Abnormalities in Patients with Multiple Myeloma, as Detected by Chromosome Microarray Analysis (CMA)*
- 

**2:55–3:00 PM CLOSING REMARKS:** Reza Nejati, MD, Fox Chase Cancer Center

# CONFERENCE OBJECTIVES

- Recognize the indicators/markers and test results to look for in complex cases to aid in diagnosis
- When appropriate, incorporate recent molecular immunophenotypic and genetic information when interpreting results, determining diagnoses and selecting therapies
- Discuss the latest advances related to the characteristics of progression in B-cell lymphomas

## POSTERS

- 1 **Vinay S Mallikarjuna, MD**, Fox Chase Cancer Center – *Role of Chromosomal Microarrays in the Evaluation of Myelodysplastic Syndromes: A Single-Institution Experience*
- 2 **Jagmohan S. Sidhu, MD**, United Health Services Hospitals – *Primary Omental Gamma-Delta T-Cell Lymphoma with Clonal Eosinophilia: The Story of a Challenging Case that Begins with Falling into the Trap of Anchoring Bias*
- 3 **Jianming Pei, MD**, Fox Chase Cancer Center – *Chromosomal Microarray and RNA Fusion NGS Analyses in Hematolymphoid Malignancies*
- 4 **Ahmed Lazim, MD, MSc**, Temple University Health System – *A t(14;18) Negative Nodal Diffuse Follicular Lymphoma with 1p36/TNFRSF14 LOH Detected by Cytogenomic Microarray Analysis*
- 5 **Amrat Kumar, MD**, Bassett Medical Center – *A Case Report on Simultaneous Co-Occurrence of Chronic Myeloid Leukemia and Chronic Lymphocytic Leukemia*
- 6 **Jinjun Cheng, MD**, Children's National Medical Center – *Pediatric Acute Erythroid Leukemia with Monocytic Antigen Expression and Novel Chromosomal Translocation*
- 7 **Vinodh Pillai, MD, PhD**, The Children's Hospital of Philadelphia – *Histiocytic Sarcoma, Transdifferentiated from B-ALL*
- 8 **Liping Li, MD, PhD**, Geisinger Medical Laboratories – *A Case Report of Rapidly Progressing Post-Polycythemia Myelofibrosis and Myeloid Sarcoma*
- 9 **Yi Sun, MD, PhD**, Rutgers-Robert Wood Johnson University Hospital – *High Grade B-Cell Lymphoma Mimicking Follicular Lymphoma with Diffuse Pattern*
- 10 **Eric Behling, MD**, MD Anderson Cancer Center at Cooper University Hospital – *A Rare Case of Epstein-Barr Virus-Positive Plasmacytoma: A Newly Described Entity*
- 11 **Siddharth Bhattacharyya, MD**, Perelman School of Medicine at the University of Pennsylvania – *CLL with Prolymphocytic Transformation*
- 12 **Patricia M Kim, MD**, Penn State Hershey Medical Center – *Hepatosplenic T-Cell Lymphoma (HSTCL)*
- 13 **Qing Wang, MD**, Montefiore Medical Center – *Follicular Dendritic Cell Sarcoma: A Rare Visitor in Hematopathology*
- 14 **Ukuemi F Edema, MD**, Montefiore Medical Center/ Albert Einstein College of Medicine – *Primary "Null Cell" ALK1 (+) Anaplastic Large Cell Lymphoma Mimicking Skeletal Muscle Sarcoma – A Challenging Diagnosis*
- 15 **Erin Neumann Domer, MS**, Fox Chase Cancer Center – *Validation and Application of Tissue FISH for Diffuse Large B-Cell Lymphoma Testing; the Fox Chase Experience*
- 16 **Jianming Pei, MD**, Fox Chase Cancer Center – *Copy Neutral Loss of Heterozygosity in Lymphoid Malignancies*
- 17 **Jagmohan S. Sidhu, MD**, United Health Services Hospitals – *Erdheim Chester Disease: BRAFV600E Mutation Exorcised the Ghosts of Previous Failures*

## EXHIBITORS

### SILVER

AstraZeneca

Gilead

Incyte

### BRONZE

ADC Therapeutics

Alexion

Blueprint Medicines

IPSEN

Jazz

Pharmaceuticals

NeoGenomics

Tempus

## Sign in to Get Attendance

- 1 Go to [www.eeds.com](http://www.eeds.com)
- 2 Click the "Sign in" Button
- 3 Enter the Code **00CHON**

## Or Scan This QR Code



The conference code will expire on Sunday, May 21, 2023 at 8:30 AM

**ACCREDITATION STATEMENT** The Temple Health Office for Continuing Medical Education is accredited by the Pennsylvania Medical Society to provide continuing medical education for physicians.

**CERTIFICATION STATEMENT** The Temple Health Office for Continuing Medical Education designates this live activity for a maximum of **5.0 AMA PRA Category 1 Credits™**. Physicians should only claim the credit commensurate with the extent of their participation in the educational activity.

**DISCLOSURE POLICY** It is the policy of the Temple Health Office for Continuing Medical Education to ensure that all sponsored continuing medical education activities are independently designed and produced and include content that is valid, objective, balanced, free of commercial bias, and in the best interest to the public. Temple Health policy requires everyone in a position to control the content of an educational activity to disclose all financial relationships with ineligible companies and to disclose discussions of unlabeled/unapproved uses of drugs or devices during their presentation(s). The Temple Health Office for Continuing Medical Education has established policies in place that will identify and resolve all conflicts of interest prior to this educational activity.

