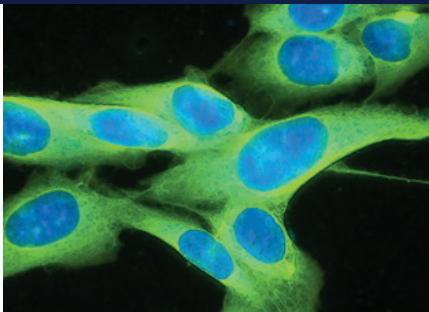




ADULT SERVICES 2019-20 Referral Services Guide





UCSF Health is recognized throughout the world

for innovative treatments, advanced technology, collaboration among clinicians and scientists, and a highly compassionate team of patient care providers. Virtually every clinical specialty is offered here, in addition to specialized centers that unite a team of experts from across disciplines to provide integrated care for complex conditions.

UCSF Medical Center has been recognized once again as one of the nation's best hospitals in U.S. News & World Report's 2019-20 Best Hospitals survey. The medical center ranked seventh in the nation and received special recognition for exceptional performance in 15 medical specialties, including top-10 status in 10 specialties.



Cancer Programs

To make an adult oncology referral, use the numbers below or call our Cancer Services Referral Center at 877-UCSF-CAN (877-827-3226), Monday through Friday, 8 a.m. to 5 p.m.

Anal Neoplasia

P 415-353-7100 F 415-353-4298

Breast Care Plastic and Reconstructive Surgery

Robert Foster, MD

P 415-885-7729 F 415-353-9541

Hani Sbitany, MD

P 415-353-9985 F 415-353-4330

Breast Medical Oncology

P 415-353-7070 F 415-353-7692

Breast Surgical Oncology

P 415-353-7070 F 415-353-7050

Cancer Genetics and Prevention

P 415-885-7779 F 415-885-3787

Cancer Resource Center

P 415-885-3693 F 415-885-3701

Colorectal Surgery

P 415-885-3606 F 415-885-7678

Cutaneous Lymphoma

P 415-353-7800 F 415-353-7870

Early Phase Investigational Therapeutics

P 415-885-7796 F 415-885-7672

Endocrine Surgical Oncology

P 415-353-7687 F 415-353-7781

Gastrointestinal Medical Oncology

P 415-353-9888 F 415-353-9931

Gastrointestinal Surgical Oncology

P 415-502-5577 F 415-502-2236

Genitourinary Medical Oncology

P 415-476-4616 F 415-353-7107

Gynecologic Dysplasia Clinic

P 415-514-0800 F 415-353-9953

Gynecologic Surgical Oncology

P 415-353-9600 F 415-885-7662

New Patient Fax

F 415-353-7657

Head and Neck Medical Oncology

P 415-353-9900 F 415-885-3802

Hematology and Blood and Marrow Transplant

New Patients

P 415-353-2051 F 415-353-7765

Existing Patients

P 415-353-2421 F 415-353-2467

Hereditary Cancer Care

P 415-353-9797 F 415-353-8216

Medicine, Dysplasia and Dental Oncology

P 415-476-2045 F 415-514-2862

Melanoma and Skin Cancer

P 415-353-9900 F 415-353-7050

Neurological Oncology

Brain Tumor Center

P 415-353-2966 F 415-353-2167

Nurse Navigator

P 415-353-2193 F 415-353-2167

Neurosurgery/Neurospine Clinic

P 415-353-7500 F 415-353-2889

Ocular Oncology

P 415-353-2966 F 415-353-2167

Orthopaedic Surgical Oncology

P 415-885-3800 F 415-514-5661

Pelvic Physiology

P 415-514-6918 F 415-885-7678

Radiation Oncology at Mission Bay

P 415-353-7175 F 415-353-9883

New Patients

P 415-353-9807

Radiation Oncology at Mount Zion

P 415-353-7175 F 415-353-9883

New Patients

P 415-353-9807

Radiation Oncology at Parnassus

P 415-353-7175 F 415-353-8679

New Patients

P 415-353-8335

Sarcoma Medical Oncology

P 415-885-3882 F 415-353-7151

Sarcoma Surgical Oncology

P 415-885-3882 F 415-353-7151



(CONT.) CANCER PROGRAMS

Symptom Management Service
P 415-885-7671 F 415-353-9522

Thoracic Surgery and Oncology Clinic
P 415-885-3882 F 415-353-7151

Urologic Surgical Oncology
P 415-353-7171 F 415-353-7093

Cardiovascular Services

Adult Congenital Heart Disease (ACHD) Clinic
P 415-476-2243 F 415-353-2528

Advanced Heart Failure Evaluation and Therapies Program
P 415-353-4145 F 415-353-4166

Asian Heart and Vascular Center
P 415-885-3678 F 415-885-3676

Cardiac Critical Care
P 415-353-9166 (Transfer Center)

Cardiothoracic Surgery
P 415-353-1606 F 415-353-1312

Cardiovascular Care and Prevention at Mission Bay
P 415-353-2873 F 415-353-2528

Cardiovascular Care and Prevention Center – Golden Gate Practice
P 415-502-5099 F 415-502-5097

Cardiovascular Diagnostic Testing at Mount Zion
P 415-885-7321 F 415-885-7849

Cardiovascular Genetics Program
P 415-353-2873 F 415-353-2528

Center for Aortic Disease
P 415-353-2256 F 415-353-2669

ECG and Stress Testing Laboratories at Parnassus
P 415-353-1931 F 415-353-1784

Echocardiography at Mount Zion
P 415-885-7321 F 415-885-7849

Echocardiography at Parnassus
P 415-353-1262 F 415-353-8675

Electrophysiology and Arrhythmia Service
P 415-476-8237 F 415-353-3181

Heart and Vascular Disease Prevention
P 415-353-2873 F 415-353-2528

Heart Transplant
P 415-353-4145 F 415-353-4166

Heart Valve Disease Clinic
P 415-353-2873 F 415-353-2528

Hypertrophic Cardiomyopathy (HCM)
P 415-353-2873 F 415-353-2528

Interstitial Lung Disease and Sarcoidosis Clinic
P 415-353-2577 F 415-353-8944

Interventional Cardiology
P 415-353-3958 F 415-353-8713

Limb Preservation Center
P 415-353-2256 F 415-353-2669

Lung Transplant Program
P 415-353-4145 F 415-353-4166

Mechanical Circulatory Support
P 415-353-4145 F 415-353-4166

Pulmonary Hypertension Clinic
P 415-353-9088 F 415-353-3889

Vascular and Endovascular Surgery
P 415-353-2256 F 415-353-2669

Vascular Laboratory at Parnassus
P 415-353-1286 F 415-353-8706

Critical Care

Intensive Care Unit at Parnassus
P 415-353-1621 F 415-353-1951

Dentistry

Oral and Maxillofacial Surgery
P 415-476-1316 F 415-712-0617

Oral Medicine
P 415-476-2045 F 415-514-2862

Orofacial Pain and TMJ
P 415-476-8298 F 415-502-5757



Dermatology

Dermatologic Surgery and Laser

P 415-353-7878 F 415-353-7838

Dermatology (Stage I and II Melanoma)

P 415-353-7817 F 415-353-7870

Dermatology (Stage III and IV Melanoma)

Medical Oncology

P 415-353-7022 or 415-353-9900
F 415-885-3802

Melanoma Center

P 415-353-9900 F 415-353-7050

Psoriasis, Eczema and Phototherapy

P 415-476-4701 F 415-502-4126

Vascular Anomalies

P 415-353-7823 F 415-353-7478

Endocrinology and Metabolism

Diabetes at Mount Zion

P 415-885-3868 F 415-885-7724

Endocrine Surgical Oncology

P 415-353-7687 F 415-353-7781

Endocrinology at Mount Zion

P 415-885-7574 F 415-885-7724

Endocrinology at Parnassus

P 415-353-2350 F 415-353-2337

- Diabetes
- Lipid
- Thyroid

Gastroenterology

Bariatric Surgery

P 415-353-2804 F 415-353-2505

Colorectal Surgery

P 415-885-3606 F 415-885-7678

Gastroenterology at Mount Zion

P 415-502-4444 F 415-502-2249

- Endoscopy at Mount Zion and Parnassus
- Inflammatory bowel disease
- Gastrointestinal motility and secretion

Gastroenterology at Parnassus

P 415-502-2112 F 415-514-3300

Gastrointestinal Surgical Oncology

P 415-502-5577 F 415-502-2236

General and Gastrointestinal Surgery

P 415-353-2161 F 415-353-2505

Intestinal Rehabilitation Program

P 415-353-2336 F 415-353-8917

Liver Transplant and Hepatology

P 415-353-2318 F 415-353-2407

Genetics

Cancer Genetics and Prevention

P 415-885-7779 F 415-885-3787

Cardiovascular Genetics

P 415-353-2873 F 415-476-2528

General Genetics Clinic

P 415-476-2757 F 415-476-9305

Lysosomal Storage Disease

P 415-476-9997 F 415-476-9976

Memory and Aging Center

P 415-353-2057 F 415-353-8292

Neurometabolic

P 415-476-9997 F 415-476-9976

Prenatal Diagnostic Center

P 415-476-4080 F 415-353-4077

Preventive Genomics Clinic

P 415-476-2757 F 415-476-9305

Hematology and Blood and Marrow Transplant

P 415-353-2051 F 415-353-7765

Existing Patients

P 415-353-2421 or 415-353-2467

HIV and AIDS

P 415-353-2119 F 415-353-2406

Infectious Diseases

P 415-353-2626 F 415-353-2568



Integrative Medicine (Osher Center)

P 415-353-7700 F 415-353-7358

Nephrology

Connie Frank Transplant Center
at UCSF

P 415-353-1551 F 415-476-6682

Nephrology and
Hypertension Practice

P 415-353-2507 F 415-353-2530

Neurology

Amyotrophic Lateral Sclerosis
(ALS)

P 415-353-2122 F 415-353-2898

Brain Tumor Center

P 415-353-2966 F 415-353-2167

California Center for Pituitary
Disorders

P 866-559-5543 F 415-353-2889

Diagnostic Neurology

P 415-353-2273 F 415-353-2898

Electromyography (EMG)

P 415-353-4965 F 415-353-2898

Epilepsy

P 415-353-2437 F 415-353-2837

Gamma Knife Radiosurgery
Coordinator

P 415-353-7500 F 415-353-2889

General Neurology

P 415-353-2273 F 415-353-2898

- Movement disorders
- Neuromuscular disorders and neuropathy
- Neurorehabilitation
- Parkinson's disease

General Nuclear Medicine and
Positron Emission Tomography

P 415-353-2573 F 415-353-7299

Headache

P 415-353-8393 F 415-353-9539

Interventional Neuroradiology

P 415-353-1863 F 415-353-8606

Memory and Aging Center

P 415-353-2057 F 415-353-8292

Movement Disorder and
Modulation Center

P 415-353-2311 F 415-353-9060

Multiple Sclerosis

P 415-353-2069 F 415-353-2633

Nerve Injury Clinic

P 415-353-7500 F 415-353-2889

Neurohospitalist Service

Outpatient Referrals

P 415-514-1575

Inpatient Referrals

P 415-353-9166

Neurovascular Disease and Stroke
Center

P 415-353-8897 F 415-353-8705

Peripheral Neuropathy

P 415-353-8897 F 415-353-8705

Precision Spine and Peripheral
Nerve Center

P 415-353-7140 F 415-353-2898

Surgical Movement Disorders

P 415-353-2311 F 415-353-9060

Neurosurgery

Neurological Oncology

Nurse Navigator

P 415-353-2193 or 415-353-2167

Neurosurgery

P 415-353-2966 F 415-353-2167

Neurosurgery/Neurospine Clinic

P 415-353-7500 F 415-353-2889

Spine

P 866-817-7463 F 415-353-2176

Spine Electromyography (EMG)

P 415-353-4965 F 415-353-2898

Vascular Neurosurgery

P 415-353-7500 F 415-353-8705

Obstetrics, Gynecology and Reproductive Sciences

Antenatal Testing

P 415-353-2722 F 415-353-2496



Comprehensive Fibroid Center
P 415-885-7788 F 415-353-9550

Fetal Treatment Center
P 800-793-3887 F 415-502-0660

Gynecologic Dysplasia Clinic
P 415-514-0800 F 415-353-9953

Gynecologic Surgical Oncology
P 415-353-9600 F 415-885-7662
New Patient Fax
F 415-353-7657

Gynecology
P 415-885-7788 F 415-353-9550

Obstetric and Perinatal Specialties
P 415-353-2566 F 415-353-2496

Obstetrics
P 415-353-2566 F 415-353-2496

**Obstetrics and Gynecology
at Owens Street**
P 415-353-4600

**Pelvic Medicine and
Reconstructive Surgery**
P 877-366-8532 F 415-353-9550

Prenatal Diagnostic Center
P 415-476-4080 F 415-353-4077

Reproductive Health
P 415-353-7475 F 415-353-7744

Women's Continenence
P 415-885-7788 F 415-353-9550

Women's Health Resource Center
P 415-353-2667 F 415 514 4803

Women's Options Center
P 415-353-7399 F 415-353-9605

Occupational and Environmental Medicine

P 415-885-7580 F 415-514-5614

Oncology, Medical

Anal Neoplasia
P 415-353-7100 F 415-353-4298

Breast
P 415-353-7070 F 415-353-7692

Gastrointestinal
P 415-353-9888 F 415-353-9931

Gynecologic Dysplasia
P 415-514-0800 F 415-353-9953

**Hematology and Blood and
Marrow Transplant**
New Patients
P 415-353-2051 F 415-353-7765
Existing Patients
P 415-353-2421 F 415-353-2467

Melanoma
P 415-353-9900 F 415-353-7050

Neurological Oncology
Brain Tumor Center
P 415-353-2966 F 415-353-2167
Nurse Navigator
P 415-353-2193 F 415-353-2167

Neurosurgery/Neurospine Clinic
P 415-353-7500 F 415-353-2889

Ocular
P 415-514-6918 F 415-514-5711

Thoracic
P 415-885-3882 F 415-353-7151

Urologic
P 415-353-7171 F 415-353-7093

Ophthalmology

Adult Strabismus
P 415-353-2800 F 415-353-2468

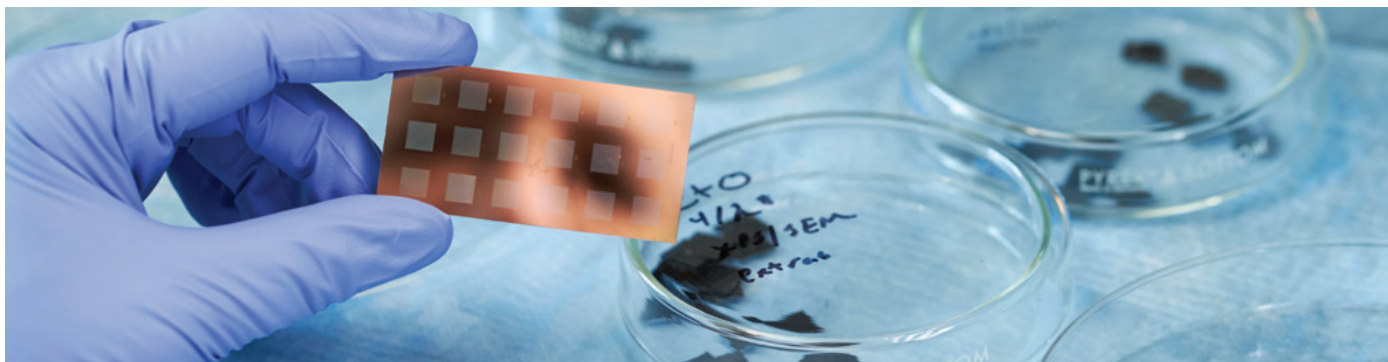
Corneal Disease and Surgery
P 415-514-8200 F 415-514-6919

General Ophthalmology Clinic
P 415-353-2800 F 415-514-5870

Glaucoma
P 415-514-6920 F 415-353-4250

Neuro-Ophthalmology
P 415-476-7176 F 415-476-8309

Ocular Oncology
P 415-514-6918 F 415-514-5711



(CONT.) OPHTHALMOLOGY

Ocular Plastic and Reconstructive Surgery

P 415-353-9399 F 415-514-6034

Ophthalmic Diagnostic Imaging

P 415-353-2800 F 415-353-2654

Refractive Surgery and Laser Vision

P 415-353-2020 F 415-514-6904

Retina and Vitreous

P 415-353-2800 F 415-353-2713

Orthopaedic Surgery

Cartilage Repair and Regeneration

P 415-353-7566 F 415-885-3852

Orthopaedic Institute at Owens Street

P 415-353-2808 F 415-885-3862

- Arthritis and joint replacement
- Foot and ankle
- Hand, elbow and upper extremity
- Orthopaedic trauma
- Physiatry
- Shoulder surgery
- Skeletal health
- Spine
- Sports medicine
- Trauma

Orthopaedic Surgical Oncology

P 415-885-3800 F 415-514-5661

Ortho-Spine

P 415-353-9378 F 415-353-4047

Orthotics and Prosthetics Center at Mission Bay

P 415-476-1788 F 415-476-7003

Orthotics and Prosthetics Center at Parnassus

P 415-476-1788 F 415-476-7003

Sports Concussion

P 415-353-1915 F 415-514-6075

Otolaryngology – Head and Neck Surgery

Audiology and Hearing Aids

P 415-353-2101 F 415-353-2883

Balance and Falls

P 415-353-2101 F 415-353-2883

Cochlear Implant

P 415-353-2464 F 415-353-2603

Facial Plastic and Reconstructive Surgery

P 415-353-9500 F 415-885-7785

Head and Neck Medical Oncology

P 415-353-9900 F 415-885-3802

Otolaryngology – Head and Neck Surgery

P 415-353-2757 F 415-353-2603

Thyroid and Parathyroid Surgery

P 415-885-7528 F 415-885-7711

Voice and Swallowing

P 415-885-7700 F 415-885-7800

Pain Management

P 415-885-3552 F 415-885-3883

Psychiatry

Early Psychosis

P 415-476-7278

Eating Disorders Program

P 415-353-2002 F 415-353-2466

Electroconvulsive Therapy Program

P 415-476-7430

Langley Porter Psychiatric Hospital and Clinics

P 415-476-7500 F 415-502-6361

- Anxiety Disorders Clinic
- Bipolar Disorder Program
- Depression Specialty Clinic
- Group services
- Medication Management Clinic
- OCD and Tics Clinic
- Psychiatric Assessment and Brief Intervention (PABI) Program
- Psychopharmacology Assessment Clinic
- Women's Mood and Hormone Clinic/Moms Program
- WomenCare Mental Health Program

Pulmonology

Asthma

P 415-353-2961 F 415-353-2568

Cystic Fibrosis

P 415-353-2961 F 415-353-2568



Interstitial Lung Disease and Sarcoidosis Clinic

P 415-353-2577 F 415-353-8944

Interventional Pulmonary

P 415-885-3882 F 415-353-9525

Lung Transplant

P 415-353-4145 F 415-353-4166

Pulmonary Function Laboratory at Mount Zion

P 415-885-7755 F 415-885-3852

Pulmonary Function Laboratory at Parnassus

P 415-476-2995 F 415-502-7990

Pulmonary Hypertension Clinic

P 415-353-9088 F 415-353-3889

Pulmonary Practice at Mount Zion

P 415-885-7755 F 415-885-3852

Pulmonary Practice at Parnassus

P 415-353-2961 F 415-353-2568

Sleep Disorders

P 415-885-7886 F 415-885-3650

Thoracic Oncology Program

P 415-885-3882 F 415-353-7151

Radiation Oncology

Radiation Oncology at Mission Bay

P 415-353-7175 F 415-353-9883

New Patients

P 415-353-9807

Radiation Oncology at Mount Zion

P 415-353-9807 F 415-353-9883

New Patients

P 415-353-9807

Radiation Oncology at Parnassus

P 415-353-7175 F 415-353-8679

New Patients

P 415-353-8335

Radiology and Biomedical Imaging

Breast Imaging

P 415-353-9800 F 415-353-9910

Imaging at China Basin

P 415-353-2573 or 415-353-4500
F 415-353-4522

Interventional Radiology at Mount Zion

P 415-885-3578 F 415-885-8570

Interventional Radiology at Parnassus

P 415-353-1300 F 415-353-8570

Neurointerventional Radiology

P 415-353-1863 F 415-353-8606

Precision Spine and Peripheral Nerve

P 415-353-4500 F 415-353-7299

Rehabilitation Medicine

Neurorehabilitation

P 415-353-2273 F 415-353-2898

Physical Therapy Clinic

P 415-353-7598 F 415-353-9554

Rheumatology

P 415-353-2497 F 415-353-2530

- Ankylosing spondylitis
 - Lupus
 - Rheumatoid arthritis
 - Scleroderma
 - Vasculitis
-

Sjögren's Syndrome

P 415-476-2045 F 415-514-2862

Spine Center

Neurosurgery/Neurospine Clinic

P 415-353-7500 F 415-353-2889

Ortho-Spine

P 866-817-7463 F 415-353-4047

Surgery

Bariatric

P 415-353-2804 F 415-353-2505

Breast Care Plastic and Reconstructive Surgery

Robert Foster, MD

P 415-885-7729 F 415-353-9541

Hani Sbitany, MD

P 415-353-9985 F 415-353-4330

Breast Surgical Oncology

P 415-353-7070 F 415-353-7050



(CONT.) SURGERY

Cardiothoracic

P 415-353-1606 F 415-353-1312

Colorectal

P 415-885-3606 F 415-885-7678

Dermatologic Surgery and Laser Center

P 415-353-7878 F 415-353-7838

Endocrine Surgical Oncology

P 415-353-7687 F 415-353-7781

Fetal Treatment Center

P 800-793-3887 F 415-502-0660

Gastrointestinal Surgical Oncology

P 415-502-5577 F 415-502-2236

General and Gastrointestinal

P 415-353-2161 F 415-353-2505

Gynecologic Surgical Oncology

P 415-353-9600 F 415-885-7662

New Patients

F 415-353-7657

Head and Neck Medical Oncology

P 415-353-9900 F 415-885-3802

Neurosurgery

P 415-353-7500 F 415-353-2889

Oral and Maxillofacial

P 415-476-1316 F 415-712-0617

Orthopaedic

P 415-353-2808 F 415-885-3862

Orthopaedic Surgical Oncology

P 415-885-3800 F 415-514-5661

Orthopaedic Trauma

P 415-353-9400 F 415-885-3862

Otolaryngology – Head and Neck

P 415-353-2757 F 415-353-2603

Plastic and Reconstructive

Noncosmetic

P 415-353-4201 F 415-353-4622

Cosmetic

P 415-353-3526 F 415-353-4330

Thoracic Surgery and Oncology Clinic

P 415-885-3882 F 415-353-7151

Urologic Surgical Oncology

P 415-353-7171 F 415-353-7093

Urology Practice

P 415-353-2200 F 415-353-7093

Vascular and Endovascular

P 415-353-2256 F 415-353-2669

Transgender Care

LGBT Mental Health

P 415-476-7500 F 415-502-6361

Plastic and Reconstructive Surgery

P 415-353-4201 F 415-353-4330

Primary Care

P 415-885-7770 F 415-353-3399

Urology

P 415-353-2200 F 415-353-2641

Voice and Swallowing Center

P 415-885-7700 F 415-885-7800

Transplant

Auto Islet

P 415-353-1473 F 415-353-8709

Heart

P 415-353-4145 F 415-353-4166

Hematology and Blood and Marrow

P 415-353-2051 F 415-353-2467

Kidney and Pancreas

P 415-353-1551 F 415-353-8708

Liver

P 415-353-1888 F 415-353-2102

Lung

P 415-353-4145 F 415-353-4166

Urology

Center for Male Reproductive Health

P 415-353-7475 F 415-514-7744

Urology Practice

P 415-353-2200 F 415-353-2641

Urologic Surgery and Oncology

P 415-353-7171 F 415-353-7093

REFERRAL FORM

Thank you for choosing to refer your patient to us. To start the referral process, please fax this form to the UCSF practice to which you are referring your patient.

- Fax numbers are listed in this guide. If you don't have this guide handy, you can call the Physician Liaison Service or at www.ucsfhealth.org/clinics.
- Include brief, pertinent medical records, including test results and imaging, that support the consultation.
- Include patient's insurance card (both sides) and HMO authorization if required.

If you require additional assistance, please call 800-444-2559 and ask for either the UCSF practice or the Physician Liaison Service.

Date	From
No. of pages	Title
To UCSF practice	Phone
Fax	Fax

PATIENT INFORMATION

Name of patient _____

DOB _____

Home phone _____ Work phone Cell phone _____

Parent or caregiver _____

Address _____

City _____ State _____ Zip _____

Insurance _____

CONSULTATION REQUEST INFORMATION

Diagnosis/ICD-9/10 _____

Name of UCSF MD (if known) _____ Specialty _____

Reason for consultation _____

By providing the information requested and signing below, you agree that we may initiate treatment following consultation or perform medically necessary diagnostics, in association with this consultation. We look forward to collaborating with you on your patient's treatment plan.

REFERRING PHYSICIAN INFORMATION

Referring MD _____ Specialty _____

Phone _____ Fax _____

Primary care provider _____ Phone _____

Signature _____

NOTICE OF CONFIDENTIALITY: This is a confidential fax and is intended solely for the person indicated above. If you are not the intended person, you are hereby notified of the confidential nature of this fax and that you are not entitled to read, copy or otherwise disseminate any of the information contained herein.

PHYSICIAN LIAISON SERVICE

Phone: 800-444-2559

Email: referral.center@ucsf.edu

Your source for information and connection to all the clinical programs of UCSF Health.

CASE MANAGEMENT

Phone: 415-353-1762

For care coordination, discharge planning or utilization review.

SOCIAL WORK

Phone: 415-353-1504

For psychosocial assessment and support, therapeutic interventions, complex discharge planning and community and financial resources.

HEALTH PLAN STRATEGY/CONTRACTING

Phone: 415-353-4536

To inquire about a contract with the PPO or HMO insuring your patient or to discuss a new contract.

PATIENT ASSISTANCE

Phone: 888-689-UCSF (888-689-8273)

For physician referrals, accommodations and general information.

MD LINK HELP DESK

Phone: 415-514-8790, option 1

Website: www.ucsfhealth.org/mdlink

WEBSITE

www.ucsfhealth.org



UCSF Health strives to provide equal access to our facilities and services for our patients with disabilities. For more information or assistance, please call Patient Relations at 415-353-1936 or visit www.ucsfhealth.org.



PRINTED ON PARTIALLY RECYCLED PAPER • 9.19-WDV-134