

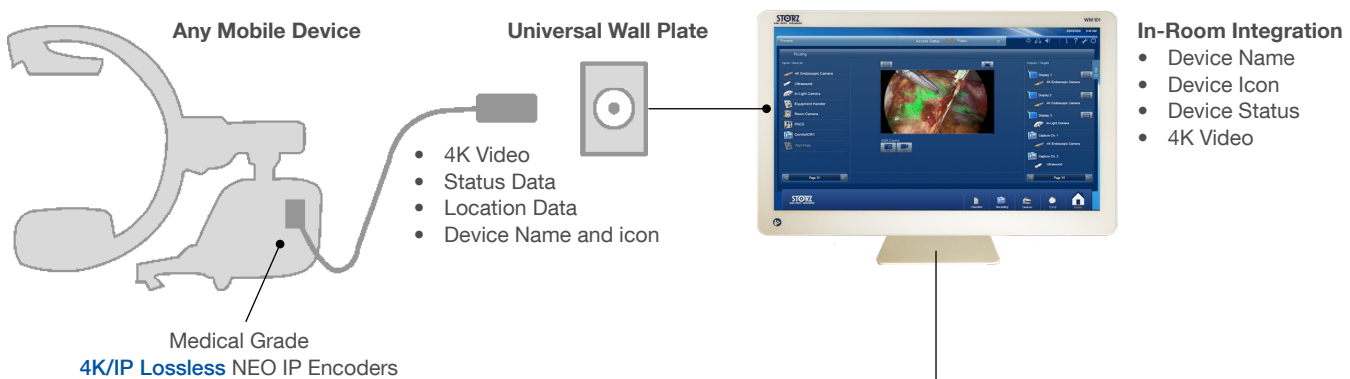
UNIVERSAL CONNECTOR SYSTEM FOR MOBILE DEVICES

HIGHLIGHTS

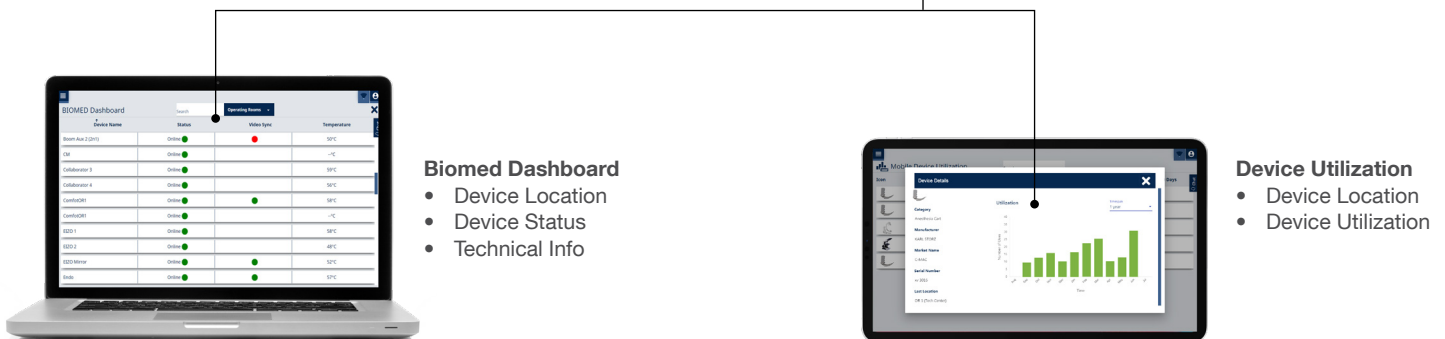
- SyncEasy is a 4K capable universal cable and connector system designed for mobile imaging equipment that rolls into operating rooms. This unifies the connection for all mobile devices, making it easy for healthcare personnel to connect devices to the integration systems. Devices also populate with their unique name and icon on the integration touchscreen.
- Realtime mobile device status and location, as well as last known location is available in the KARL STORZ Biomed Dashboard which can be accessed by any credentialed user from any computer terminal in the hospital network
- Realtime device utilization tracking is available in the KARL STORZ Device Utilization dashboard, which shows usage of mobile imaging devices over time to support data driven purchasing decisions

SYSTEM DIAGRAM

Inside the Operating Room



Outside the Operating Room



Real-Time Data Accessible From Any Computer Terminal

It is recommended to check the suitability of the product for the intended procedure prior to use.
Please note that the described products in this medium may not be available yet in all countries due to different regulatory requirements.

UNIVERSAL CONNECTOR SYSTEM FOR MOBILE DEVICES

SyncEasy Universal Wall Plate



SyncEasy Mobile Device Kit



MOBILE DEVICE KIT	DETAIL
Supported Signal Types	HDMI 2.0, DisplayPort, 12G-SDI, DVI, VGA, S-Vid, C-Vid
Resolutions	Up to 4096x2160 @ 60 Hz, supports 4K UHD & DCI
Power	12VDC, 1A (from KARL STORZ approved power sources only)
Operating Temperature	32 - 104°F (0 - 40°C)
Operating Humidity	0-95% Non-Condensing
Dimensions Ext. (WxHxD)	5.3" x 1.7" x 5.2"
Applied Standards	IEC 60601-1, IEC 60601-1-2 RoHS3, REACH, Class I Medical Devices

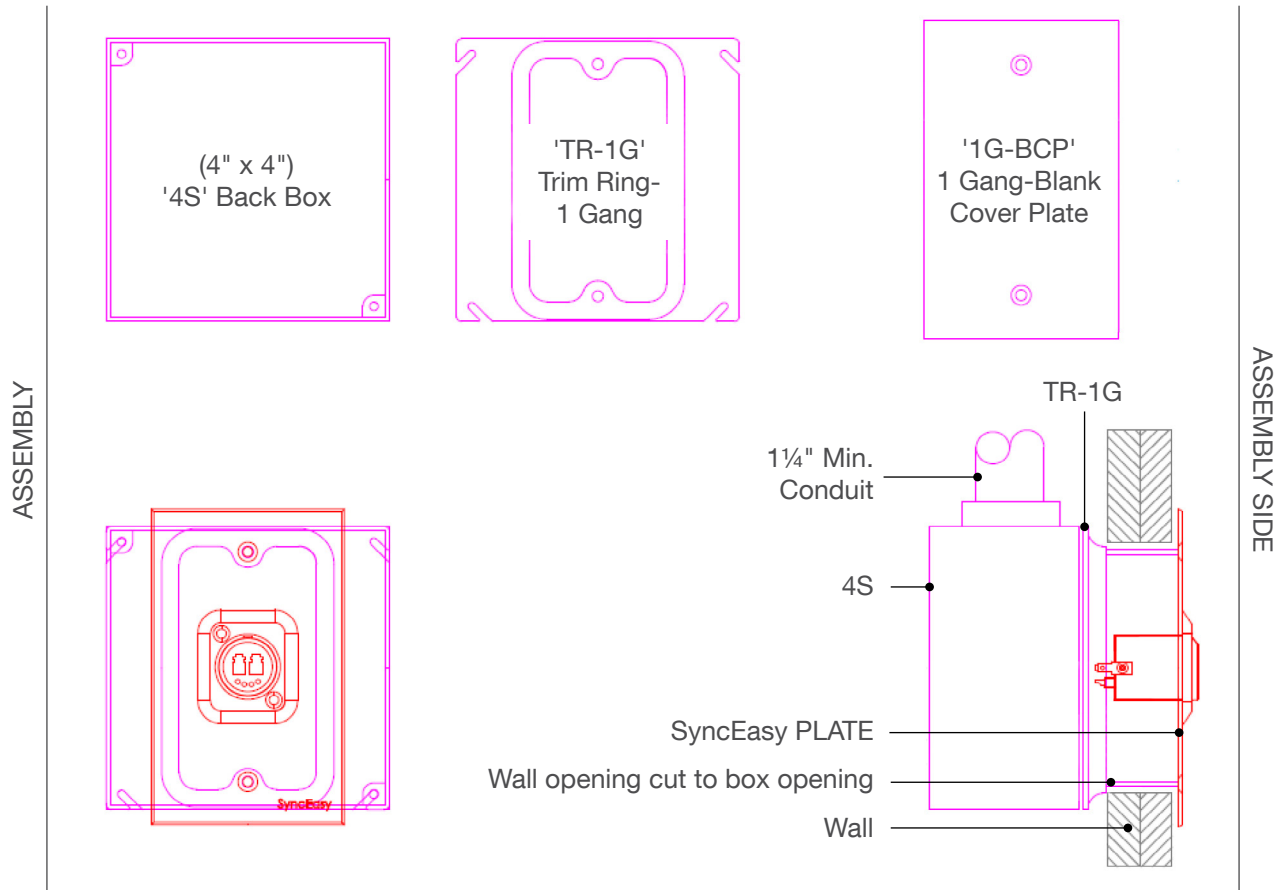
WALL PLATE	DETAIL
Connectors	Hybrid Dual LC Fiber and 12V Power
Size	Standard 1-Gang Wall Plate

CABLE	DETAIL
Length	25 ft
Connectors	Hybrid Dual LC Fiber and 12V Power
Cable	Ruggedized (Military-Grade) Jacketing and Connector
Protection	Internal cover shields fiber ends from dust and scratches automatically when cable is removed from wall plate

ORDER INFO	DETAIL
Mobile Device Kits (includes encoder and cable)	WUIS3393-01 - SyncEasy Mobile Device Kit, VGA WUIS3394-01 - SyncEasy Mobile Device Kit, C-VID/S-VID WUIS3395-01 - SyncEasy Mobile Device Kit, 12G/3G/HD-SDI WUIS3396-01 - SyncEasy Mobile Device Kit, HDMI 2.0 / DVI WUIS3401-01 - SyncEasy Mobile Device Kit, DisplayPort
Wall Plates	WUIS3398 - SyncEasy Universal Wall Plate
Spare Cables	WUIS3400 - SyncEasy Cable, 25'

It is recommended to check the suitability of the product for the intended procedure prior to use.
Please note that the described products in this medium may not be available yet in all countries due to different regulatory requirements.

INSTALLATION



NOTES

- 4" x 4" square back box minimum depth, 3 1/2"
- The drawings above are generic and for coordination only, not for construction. The KARL STORZ Customer Success Manager assigned to your project should be consulted for any site specific requirements.

It is recommended to check the suitability of the product for the intended procedure prior to use.
Please note that the described products in this medium may not be available yet in all countries due to different regulatory requirements.



KARL STORZ Endoscopy-America, Inc.
 2151 East Grand Avenue | El Segundo, CA 90245-5017, USA
 Phone: 424-218-8100 Toll-free: 800-421-0837
 Fax: 424-218-8525 Toll-free: 800-321-1304
 E-Mail: communications@karlstorz.com

FOLLOW KARL STORZ

Caution: Federal (USA) law restricts this device to sale by or on the order of physician.