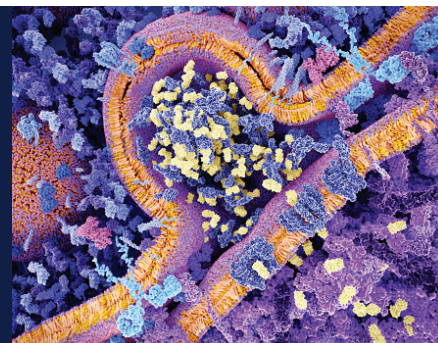


Hematology and Blood and Marrow Transplant

www.ucsfhealth.org/bmt



BEST IN NORTHERN CALIFORNIA

UCSF Medical Center is best in Northern California for cancer care



66-BED EXPANSION

Expanded Heme/BMT inpatient unit means faster and more efficient access

220+

BMT transplants performed each year



CAR T cell therapy treatments and research studies

SPECIALIZED TREATMENTS FOR ACUTE AND CHRONIC BLOOD CONDITIONS, FROM CANCERS TO THE FULL RANGE OF NON-MALIGNANT BLOOD DISORDERS.

OUR EXPERTISE INCLUDES:

- Performing allogeneic transplants across HLA barriers using alternative stem cell donors to allow more patients access to life-saving treatment.
- Performing blood and bone marrow transplants for complex cases such as patients with HIV or those in renal failure.
- Certified treatment center for FDA-approved CAR T therapies Yescarta™ (axicabtagene ciloleucel) and KYMRIAH™ (tisagenlecleucel)
- Physicians who are trained in both hematology and blood and marrow transplantation, providing patients with a seamless continuum of care and access to transplant, when necessary.

CONDITIONS TREATED

Blood and marrow cancers

Leukemia

- Acute and chronic lymphocytic leukemia
- Acute and chronic myeloid leukemia
- Myelodysplastic syndromes
- Myeloproliferative neoplasms
- Other lymphoproliferative disorders

Lymphoma

- Hodgkin and non-Hodgkin lymphoma
- Primary central nervous system lymphoma

Multiple myeloma

- Monoclonal gammopathy of undetermined significance (MGUS)
- Myeloma
- Plasmacytoma

MORE →

INFORMATION / REFERRALS

- NEW PATIENTS 415-353-2051 ■ FAX 415-353-7765
- EXISTING PATIENTS 415-353-2421 ■ FAX 415-353-2467

UCSF Helen Diller Family
Comprehensive
Cancer Center

CONDITIONS TREATED (CONT.)

Non-malignant blood conditions

- Anemia (hemolytic anemia, aplastic anemia)
- Clotting disorders (thrombosis)
- Erdheim-Chester disease
- Hemophilia and other bleeding disorders
- Langerhans cell histiocytosis
- Low levels of one or more types of blood cells (cytopenias)
- Leukopenia/neutropenia
- Overproduction of histiocytes
- Rosai-Dorfman disease
- Thrombocytopenia

WHY REFER TO UCSF?

- Member of the Parker Institute for Cancer Immunotherapy, a consortium of 10 of the world's leading cancer centers, whose focus is to quickly translate research into breakthrough treatments.
- Clinical trials that give patients access to potentially effective therapies not available elsewhere, including groundbreaking treatments such as CAR T cell therapy.
- Patients have access to the many programs and services of the cancer center, including the Symptom Management Service, Psycho-oncology and an infusion center co-located within the clinic.

CLINICAL TRIALS

For a complete list of clinical trials at UCSF, including hematology and BMT trials, visit clinicaltrials.ucsf.edu.

OUR TEAM

Wei Z. Ai, MD, PhD
Charalambos (Babis) Andreadis, MD
Shagun D. Arora, MD
Miguel Cerejo, DO
Pat Cornett, MD
Lloyd Damon, MD
Bita Fakhri, MD
Karin Gaensler, MD
Kristen Hege, MD
Lawrence Kaplan, MD
Andrew Leavitt, MD
Aaron Logan, MD
Thomas Martin, MD
Willis Navarro, MD
Rebecca Olin, MD
Michael Pourdehnad, MD
Curt Ries, MD
James Rubenstein, PhD, MD
Giselle Salmasi, MD
Peter Sayre, PhD, MD
Neil Shah, MD
Nina Shah, MD
Catherine Smith, MD
Jeffrey Wolf, MD
Sandy Wong, MD

INFORMATION / REFERRALS

- **NEW PATIENTS** 415-353-2051 ■ **FAX** 415-353-7765
- **EXISTING PATIENTS** 415-353-2421 ■ **FAX** 415-353-2467