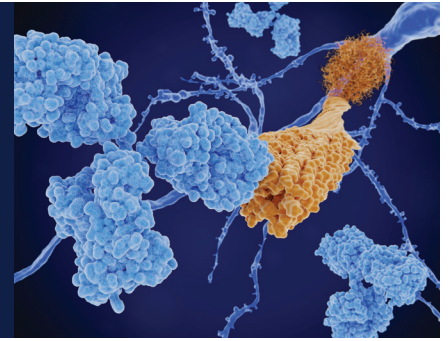
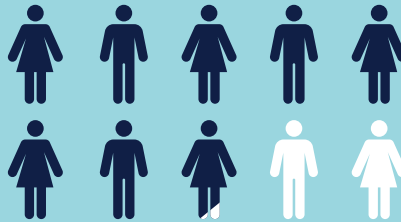


Cancer Immunotherapy Toxicity Evaluation (CITE) Program

ucsfhealth.org/CITE



UCSF Medical Center is best in Northern California for cancer care.



UP TO 79%

Prevalence of immunotherapy-related adverse events (irAEs), depending on cancer type and treatment



NATIONAL LEADER

The UCSF CITE program is among the first of its kind in the nation.

EXPERT CARE AND CONSULTS FOR IMMUNOTHERAPY TOXICITY

UCSF Health's new Cancer Immunotherapy Toxicity Evaluation (CITE) Program is a valuable resource for both patient care and provider consults. The only program of its kind in the Bay Area, our collaborative interprofessional team offers skilled consultative care for patients experiencing challenging immunotherapy-related adverse events (irAEs), such as toxicities that are resistant to standard steroid treatment. The program also delivers peer-to-peer insight and second opinions for physicians and other providers concerned about acute or chronic immunotherapy toxicities in their patients, as well as guidance on safely maintaining or restarting immunotherapy.

PROGRAM FEATURES

- Direct access to an expert team of oncologists and specialists who partner with referring providers and collaborate on individual cases
- Education on cutting-edge treatments for irAEs, along with recommendations for approaches that may prevent or minimize interruptions in immunotherapy treatment and improve quality of life
- An interdisciplinary forum to ensure coordinated expert consensus on managing irAEs and determining the safety of continuing or restarting immunotherapy
- Opportunities to participate in novel clinical trials focused on irAE prognostication and treatment
- Dedicated practice coordinator who streamlines care by expediting subspecialty consultations and other necessary tests or procedures

[MORE →](#)

INFORMATION / REFERRALS

▪ **PHONE** (415) 514-5860 ▪ **FAX** (415) 502-4727

UCSF Helen Diller Family
Comprehensive
Cancer Center

COMMON ADVERSE EVENTS FOR CONSULT

Ranging from minor to serious, immediate to late, irAEs can vary greatly in presentation depending on what organ system is affected, which can make prompt identification and treatment challenging. Some irAEs may even persist or reappear after treatment is complete. Issues may include:

- Cardiac: Myocarditis, arrhythmias
- Dermatologic: Rash, pruritus, vitiligo, Stevens-Johnson syndrome/toxic epidermal necrolysis (SJS/TEN)
- Endocrine: Hypophysitis, thyroiditis, adrenal insufficiency, diabetes
- Gastrointestinal: Diarrhea/colitis, enteritis, gastritis, hepatitis, pancreatitis
- Hematologic: Thrombocytopenia, anemia
- Neurologic: Peripheral neuropathy, encephalitis, aseptic meningitis, Guillain-Barré syndrome
- Ocular: Uveitis/scleritis
- Pulmonary: Pneumonitis
- Renal: Nephritis
- Rheumatologic: Arthritis, myositis, vasculitis, sarcoidosis

WHY REFER TO UCSF?

- The CITE team consists of physicians and specialists with in-depth expertise in specific organ systems and immunology, enabling them to advise on and address even the most complex immunotherapy-related adverse events.
- Our program works closely with other specialty groups at UCSF to ensure a seamless continuum of care and expertise. This includes collaboration with the UCSF Cancer Immunotherapy Program, which combines the collective strength of UCSF's world-class research facilities and the UCSF Helen Diller Family Comprehensive Cancer Center to provide state-of-the-art cancer immunotherapies and evaluate agents in early stages of development.
- Our team is dedicated to advancing immunotherapy care through clinical trials, precision medicine and blood/tissue specimen banking. Our ongoing biospecimen collection efforts and collaborations are designed to drive research and innovation in irAE prognostication, diagnosis and treatment.

OUR TEAM

Emily Pepe, NP, MSN

Nurse Practitioner, UCSF CITE Program

David Oh, MD, PhD

Co-Director, UCSF CITE Program
Medical Oncologist and Immunotherapy Researcher

Katy K. Tsai, MD

Co-Director, UCSF CITE Program
Medical Oncologist and Melanoma Clinical Researcher

CANCER IMMUNOTHERAPY

Adil I. Daud, MD

Lawrence H. Fong, MD

CARDIOLOGY

Mandar A. Aras, MD, PhD

Alan H. Baik, MD

Javid Moslehi, MD

DERMATOLOGY

Ryan Y. Arakaki, MD

Susana Ortiz-Urda, MD, PhD, MBA

Maria L. Wei, MD, PhD

ENDOCRINOLOGY

Zoe Quandt, MD

GASTROENTEROLOGY

Michael Kattah, MD, PhD

HEMATOLOGY

Andrew D. Leavitt, MD

HEPATOLOGY

Bilal Hameed, MBBS

Jennifer C. Lai, MD, MBA, FACP

Michael Li, MD, MPH

NEPHROLOGY

Christopher Carlos, MD

NEUROLOGY

Jeffrey Gelfand, MD, MAS, FAAN

Min Kang, MD

OPHTHALMOLOGY

Manvi P. Maker, MD, MS

PULMONOLOGY

Yaron Gesthalter, MD

Eric Seeley, MD

Diana Yu, MD

RHEUMATOLOGY

Mehrdad Matloubian, MD, PhD

Mary Nakamura, MD

INFORMATION / REFERRALS

- PHONE (415) 514-5860 ■ FAX (415) 502-4727