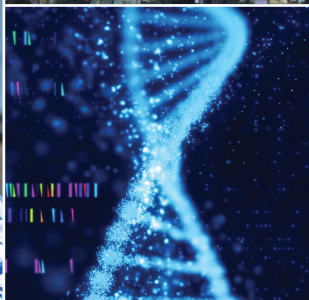


# Breast Care Center



The UCSF Breast Care Center is at the forefront of early detection, leading-edge patient care and innovative research. Our multidisciplinary approach ensures compassionate and comprehensive care tailored to each patient's unique health care journey.

**UCSF** Health

## Who We Are

---

The UCSF Breast Care Center, part of the UCSF Helen Diller Family Comprehensive Cancer Center, delivers exceptional patient care at six locations across the Bay Area. Our expanding team of experts includes breast, plastic and reconstructive surgeons; medical and radiation oncologists; radiologists; pathologists; psychologists; social workers; genetic counselors; and nutritionists.

## What We Do

---

We provide integrated care from diagnosis through treatment and beyond, all conveniently located near where our patients live and work. We develop an individualized care plan based on national treatment guidelines and each patient's cancer type, stage and overall health.

### OUR SERVICES:

**Medical Oncology:** Evaluation, diagnosis and treatment of the most frequently diagnosed types of breast cancer to the rarest and most complex. Treatments include chemotherapy, hormone therapy, immunotherapy, targeted therapy and biotherapy, along with managing the side effects and symptoms of treatment.

**Surgical Oncology:** Expert surgical approaches to promote optimal outcomes and quality of life. Options include breast-conserving surgeries and several types of mastectomies.

**Plastic Surgery and Reconstruction:** Natural-looking breast reconstruction options, including implant reconstruction and autologous reconstruction (free tissue transfer), as well as immediate lymphatic reconstruction to prevent lymphedema

**Radiation Therapy:** Targeted personalized radiation therapy treatment plans



## Patient and Family Support Services

- Genetic testing to determine future cancer risk
- Fertility Preservation Program
- Nutrition and exercise counseling to maximize wellness
- The UCSF Osher Center for Integrative Health, which provides proven conventional and complementary medical approaches from around the world
- Psycho-oncology services for patients and their families as they cope with cancer and treatment
- The UCSF Patient and Family Cancer Support Center, which offers free support groups, classes and workshops

## Cancer Survivorship and Wellness Institute

After treatment, patients have access to the UCSF Cancer Survivorship and Wellness Institute, which, in addition to regular follow-up care from your oncology team, offers individualized long-term support services, including:

- One-on-one sessions with a provider who specializes in survivorship
- Management of long-term symptoms and treatment effects, such as pain, fatigue and neuropathy
- An eight-week Survivorship Wellness Group Program, which addresses fear of recurrence, stress management, body image, emotional well-being and other issues

## Why Choose UCSF

---

At UCSF, we combine world-class medical expertise with compassionate, patient-centered care. Our team approach ensures that each patient benefits from the collective knowledge of diverse specialists who are at the forefront of cutting-edge cancer research.

### For Patients

- An expanding team of experts that advocates for you through every step of your journey
- Comprehensive care that includes holistic support for the emotional and physical challenges of breast cancer
- Access to the latest clinical trials and treatments, such as scalp cooling to help prevent chemotherapy-related hair loss

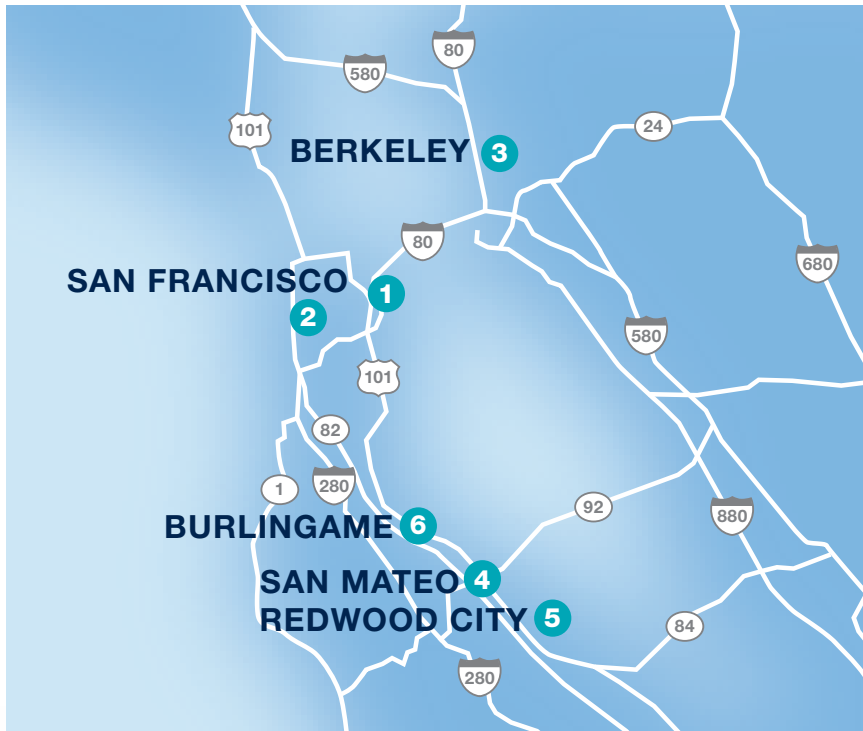
### For Physicians

- Collaborative partnership in patient care, including seamless communication and care coordination to keep you informed
- Access to innovative research and clinical trials for your patients

## LOCATIONS

At UCSF, we bring expert breast cancer care closer to you. Our collaborative team of specialists works across six locations to provide comprehensive, personalized care for every patient.

[ucsfhealth.org/breast-care](https://ucsfhealth.org/breast-care)



### San Francisco

Phone: (415) 353-7070 | Fax: (415) 353-7050

- 1 UCSF Medical Center at Mission Bay**  
1825 Fourth St., Third Floor, San Francisco, CA 94158
- 2 Carol Franc Buck Breast Care Center at Mount Zion**  
1600 Divisadero St., Fourth Floor, San Francisco, CA 94115

### East Bay/Berkeley

Phone: (510) 420-8000 | Fax: (510) 420-8001

- 3 UCSF-John Muir Health Cancer Center Berkeley**  
3100 San Pablo Ave., Suite 280, Berkeley, CA 94702

### Peninsula

Phone: (650) 341-9131 | Fax: (650) 341-9135

- 4 UCSF Cancer Center San Mateo**  
218 De Anza Blvd., San Mateo, CA 94402
- 5 UCSF Cancer Center Redwood City**  
2900 Whipple Ave., Redwood City, CA 94062
- 6 UCSF Cancer Center Burlingame**  
225 California Dr., Burlingame, CA 94010



## HOW TO CONNECT WITH US

### For Patients and Referring Physicians

To make an appointment, refer a patient or consult with our team, contact one of the locations in this guide or visit [ucsfhealth.org/breast-care](https://ucsfhealth.org/breast-care).

## OUR TEAM



**Medical Oncology**  
Kent Adler, MD  
*SM, RC, BG*



**Medical Oncology**  
Hemali  
Batra-Sharma, MD  
*MB*



**Medical Oncology**  
Jo Chien, MD  
*MB*



**Medical Oncology**  
Laura Huppert, MD  
*MB*



**Surgical Oncology**  
Laura Esserman,  
MD, MBA  
*MB*



**Surgical Oncology**  
Cheryl A. Ewing,  
MD  
*MB*



**Surgical Oncology**  
Karen Goodwin,  
DO, FACS  
*BK*



**Surgical Oncology**  
Jordan Jackson,  
MD  
*MB*



**Medical Oncology**  
Howard Lee, MD  
*BG, SM, RC*



**Medical Oncology**  
Matthew Lee, DO  
*SM, RC, BG*



**Medical Oncology**  
Melanie Majure, MD  
*MB*



**Medical Oncology**  
Natalie Marshall,  
MD  
*BK, MB*



**Surgical Oncology**  
Rita Mukhtar, MD  
*MB*



**Surgical Oncology**  
Jasmine Wong, MD  
*MB*



**Plastic Surgery**  
Robert D. Foster,  
MD, FACS  
*MB*



**Plastic Surgery**  
Bao-Quynh Julian,  
MD  
*MB*



**Medical Oncology**  
Michelle Melisko,  
MD  
*MB, SM*



**Medical Oncology**  
Mark Moasser, MD  
*MB*



**Medical Oncology**  
Pamela Munster,  
MD  
*MB*



**Medical Oncology**  
Kelsey Natsuhara,  
MD  
*MB*



**Plastic Surgery**  
Seung Ah Lee, MD  
*MB, BK*



**Plastic Surgery**  
Merisa Piper, MD  
*MB*



**Plastic Surgery**  
John Rose, MD,  
MPH  
*MB*



**Plastic Surgery**  
Anna Zhou, MD  
*MB, BG*



**Medical Oncology**  
John W. Park, MD  
*MB*



**Medical Oncology**  
Jennifer Rosenbluth,  
MD, PhD  
*MB*



**Medical Oncology**  
Melissa Taylor, MD,  
MPH  
*MB, BK*



**Medical Oncology**  
Sirisha Tummala,  
MD  
*SM, RC, BG*



**Medical Oncology**  
Elham Vosoughi,  
MD  
*MB, SM, BG*



**Surgical Oncology**  
Shoko Emily Abe,  
MD, FACS  
*BK*



**Surgical Oncology**  
Michael Alvarado,  
MD, MS  
*MB*



**Surgical Oncology**  
Julia Chandler, MD,  
MS  
*BG, MB, SM*

### Location Key

- 1 MB - Breast Care Center at Mission Bay
- 2 MZ - Carol Franc Buck Breast Care Center at Mount Zion
- 3 BK - Breast Care Center at UCSF-John Muir Health Cancer Center Berkeley
- 4 SM - Breast Care Center at UCSF Cancer Center San Mateo
- 5 RC - Breast Care Center at UCSF Cancer Center Redwood City
- 6 BG - Breast Care Center at UCSF Cancer Center Burlingame

[ucsfhealth.org/breast-care](https://ucsfhealth.org/breast-care)

## NATIONAL RECOGNITION

UCSF Medical Center is ranked No. 7 in the nation and best in California for cancer care (U.S. News & World Report 2025-2026 Best Hospitals rankings).

Designated a comprehensive cancer center by the National Cancer Institute

Accredited by the American College of Surgeons' Commission on Cancer since 1933

Founding member of the National Comprehensive Cancer Network, an alliance of the world's top cancer centers



UCSF Health strives to provide equal access to our facilities and services for our patients with disabilities. For more information or assistance, please call Patient Relations at (415) 353-1936 or visit [www.ucsfhealth.org](https://www.ucsfhealth.org).