

THE HIGH RISKS OF LOW EPILEPSY SEIZURE RATES

EVEN ONE SEIZURE A YEAR IS TOO MANY

1 in 1,000

Epilepsy patients experience sudden death (SUDEP)

**EPILEPSY IS
2nd only
to stroke**

for death from neurological condition

**EPILEPSY IS
2nd most
common**

cause of mental health disability

30%

epilepsy patients fail to respond to medication

Impact of ongoing seizures

- Brain injury
- Unemployment
- Social isolation
- Declining memory and cognition

**1,500 of
100,000**

eligible patients undergo surgical treatments annually — a "grossly underused procedure"¹

ULTIMATE GOAL: ZERO SEIZURES

CURRENT PRACTICES

"I'll try another medication"

"Surgery is not more effective"

"My patient has psychiatric comorbidities"

vs.

LATEST FINDINGS

5% of patients respond to new medications after two failed appropriately chosen drug trials (drug resistant epilepsy)²

In randomized controlled trials, surgery eliminated seizures in **58%**, medication only **8%**³

Surgical treatment typically does not impact psychiatric conditions

WHEN AND HOW TO REFER

Evaluation and advanced treatment at a specialized clinic helps deliver **better outcomes.**

Reasons to refer

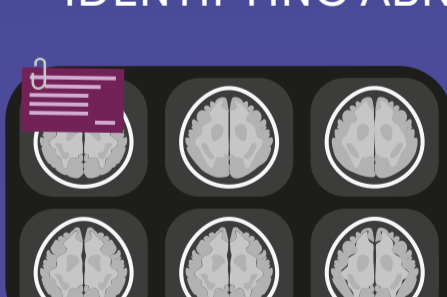
- ✓ Two failed medication trials
- ✓ Difficult/evolving condition
- ✓ Abnormalities on an MRI
- ✓ Patient deterioration

Epilepsy Patient Referral Journey

1 Call **855-421-2904**

TO REFER YOUR PATIENT TO ONE OF OUR EPILEPSY CENTERS FOR AN INITIAL CONSULT WITH AN EPILEPTOLOGIST

2 PATIENT IS ASSESSED TO DETERMINE THE RIGHT DIAGNOSTIC TESTS FOR IDENTIFYING ABNORMALITIES



The quality of MRIs can vary widely across institutions — the Sutter Health network has some of the most advanced technology.

- Prolonged video high-density EEG
- Epilepsy specific high-resolution MRI protocol
- Neuropsychological testing

3 MULTIDISCIPLINARY TEAM IDENTIFIES THE "GOOD" AND "BAD" AREAS OF THE BRAIN



Reduced surgical risks

increase precision and can achieve zero seizures

4 RESULTS INDICATE WHETHER PATIENT IS A CANDIDATE FOR SURGICAL TREATMENT



Continue partnership with referring doctor

Connect with a referral specialist at **855-421-2904** to refer a patient.