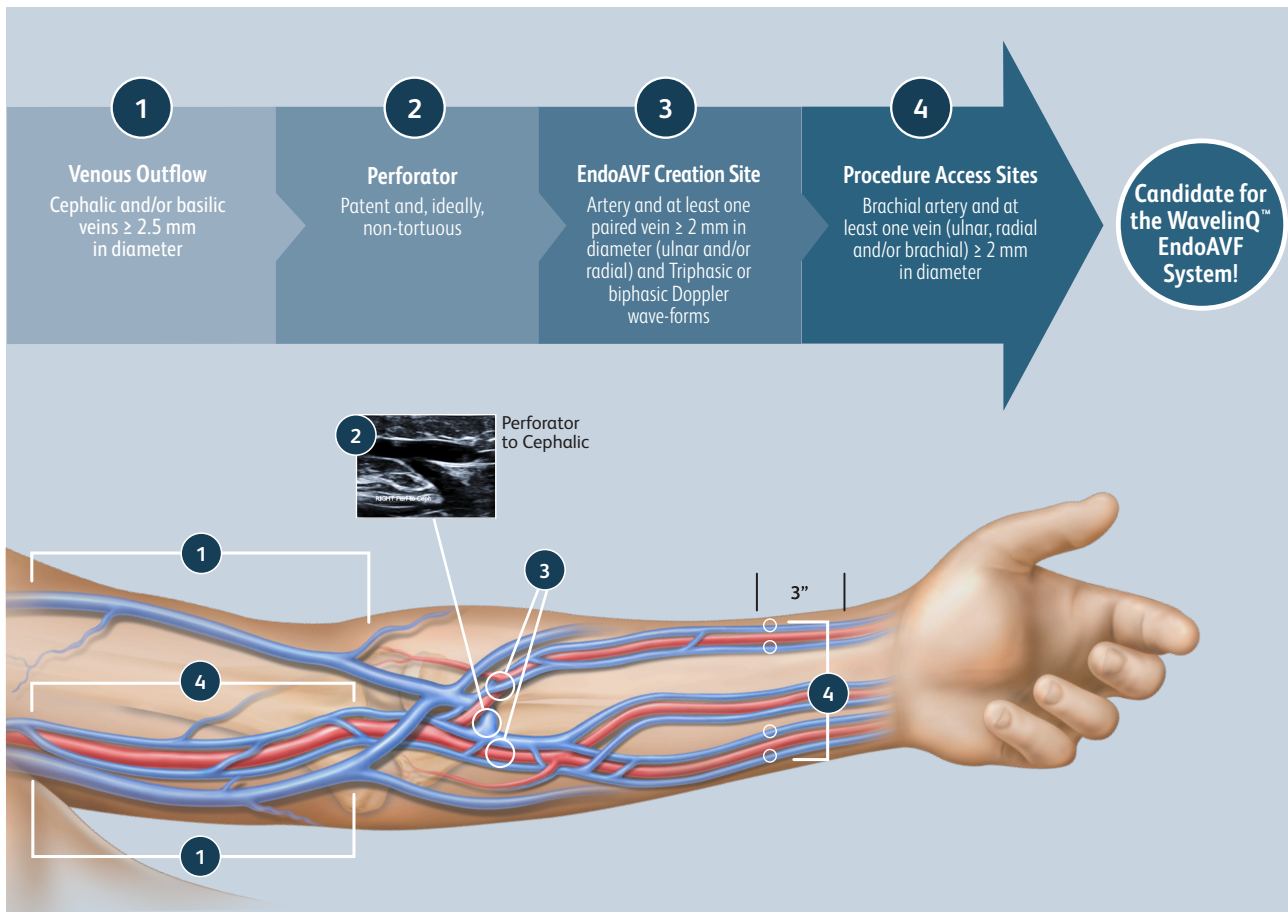


# ○ Patient screening for procedure eligibility with the **WavelinQ™ EndoAVF System**

Patients considered healthy enough to have a standard endovascular procedure and an AV fistula qualify for procedural assessment for the WavelinQ™ EndoAVF System. Proceed through the flowchart in order. If the anatomy does not meet a specific endoAVF criteria, stop and return to your protocol for surgical AV fistula assessment.

Before beginning your assessment, make sure the patient is normally hydrated and **apply a tourniquet**.



# Patient screening for procedure eligibility with the WavelinQ™ EndoAVF System



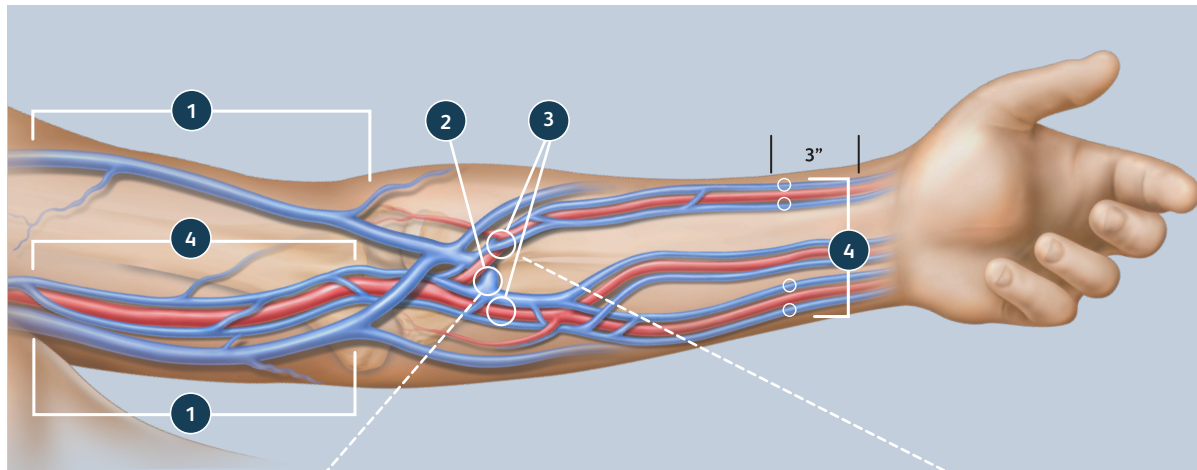
SCAN ME

WavelinQ™

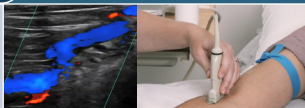
EndoAVF System

[bd.com/wavelinq](http://bd.com/wavelinq)

Medical Information  
Services: 800-555-7422



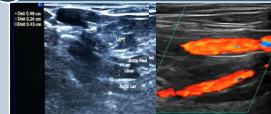
## 2 Perforator assessment



## Finding the Perforator

Follow the cephalic or basilic vein to the proximal forearm. Observe the perforator dive down as it meets the median cubital in the proximal forearm. **The perforator should direct flow centrally, towards the upper arm cephalic and/or basilic veins.**

## 3 Creation site



The WavelinQ™ EndoAVF System is indicated for the creation of an arteriovenous fistula (AVF) using concomitant ulnar artery and ulnar vein or concomitant radial artery and radial vein in patients with minimum artery and vein diameters of 2.0 mm at the fistula creation site who have chronic kidney disease and need hemodialysis. **These screening steps are not intended as a replacement for the full product directions for use. Please consult the WavelinQ™ EndoAVF System IFU for complete product description, instructions for use as well as all safety related information, including warnings, precautions and contraindications** © 2021, BD, BD, the BD logo, and WavelinQ are trademarks of Becton, Dickinson and Company or its affiliates. Illustrations by Mike Austin. All rights reserved. Bard Peripheral Vascular, Inc. | [www.bardpv.com](http://www.bardpv.com) | 1 800 321 4254 | 850 W Rio Salado Parkway, Tempe, AZ 85281 BD-17469

