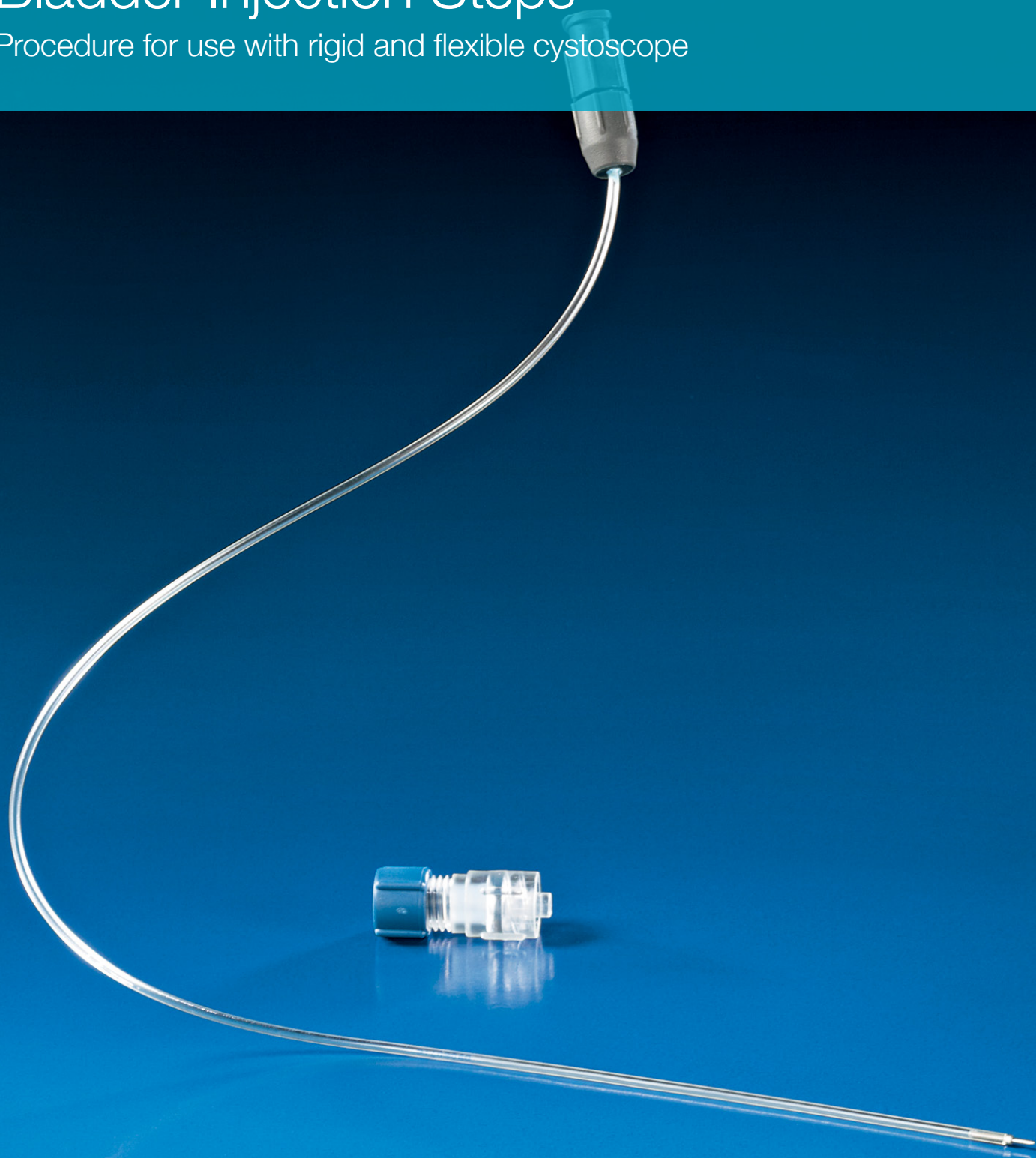


Bladder Injection Steps

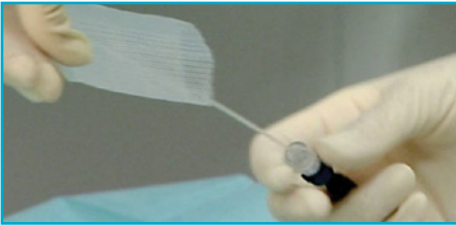
Procedure for use with rigid and flexible cystoscope



STEP-BY-STEP PROCEDURE



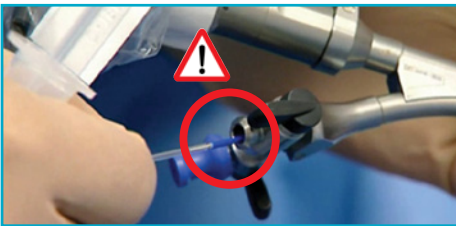
- 1 Prepare the injectable solution according to the manufacturer's instructions.



- 2 Remove the needle from its sterile packaging.



- 3 Prime the BoNee needle with the injectable solution. Connect the syringe to the Luer Taper fitting on the BoNee.

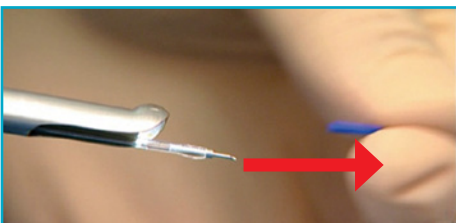


- 4 Insert the BoNee needle into the working channel of the cystoscope by pushing out the tip of the needle.

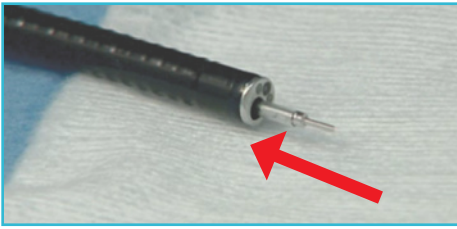
CAUTION! Leave the blue cap in place when inserting the needle so as not to damage the bevelled edge or working channel of the cystoscope.



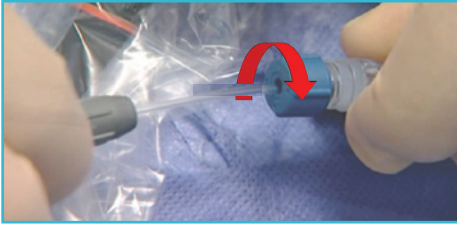
- 5 Use the Tuohy Borst adapter on the Luer Taper of the working channel (the transparent part) to attach the BoNee needle to the cystoscope.



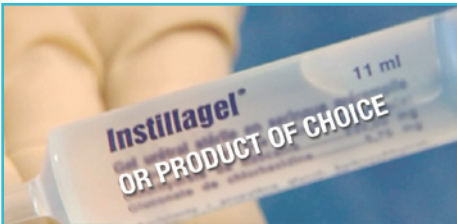
- 6 Once the needle is inserted into the cystoscope, remove and dispose of the blue cap.



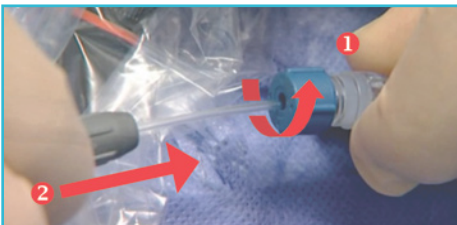
7 Pull the needle back to the opening in the working channel.



8 Screw the Tuohy Borst adapter (blue part) tightly into place in order to keep the cystoscope and BoNee needle firmly attached.



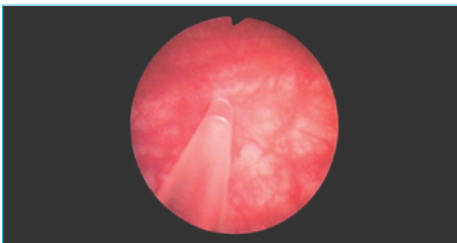
9 Lubricate the patient's urethral meatus, and then insert the cystoscope attached to the BoNee needle as far as the bladder.



10 Once in the bladder, loosen the Tuohy Borst adapter (blue part **1**) and then push the needle out of the working channel of the cystoscope **2**.



11 Re-attach the Tuohy Borst adapter (blue part) on the BoNee needle to the cystoscope in order to keep the two attached.



12 Make the required injections.



13 Once the procedure is finished, loosen the Tuohy Borst adapter of the working channel (transparent part) and remove the needle.



14 Place the needle in a container designed for sharp or pointy objects.

The Coloplast BoNee® bladder injection needle delivers low viscosity medications precisely where intended.

The 4 mm tip needle is designed to optimize volume injected inside the bladder wall and minimize volume loss beyond the bladder.

Two sizes available to meet your needs:
35 cm – for use with a rigid cystoscope.
70 cm – for use with a flexible or rigid cystoscope.

BoNee can be used with a small size cystoscope (5 FR), to reduce patient discomfort during the procedure.

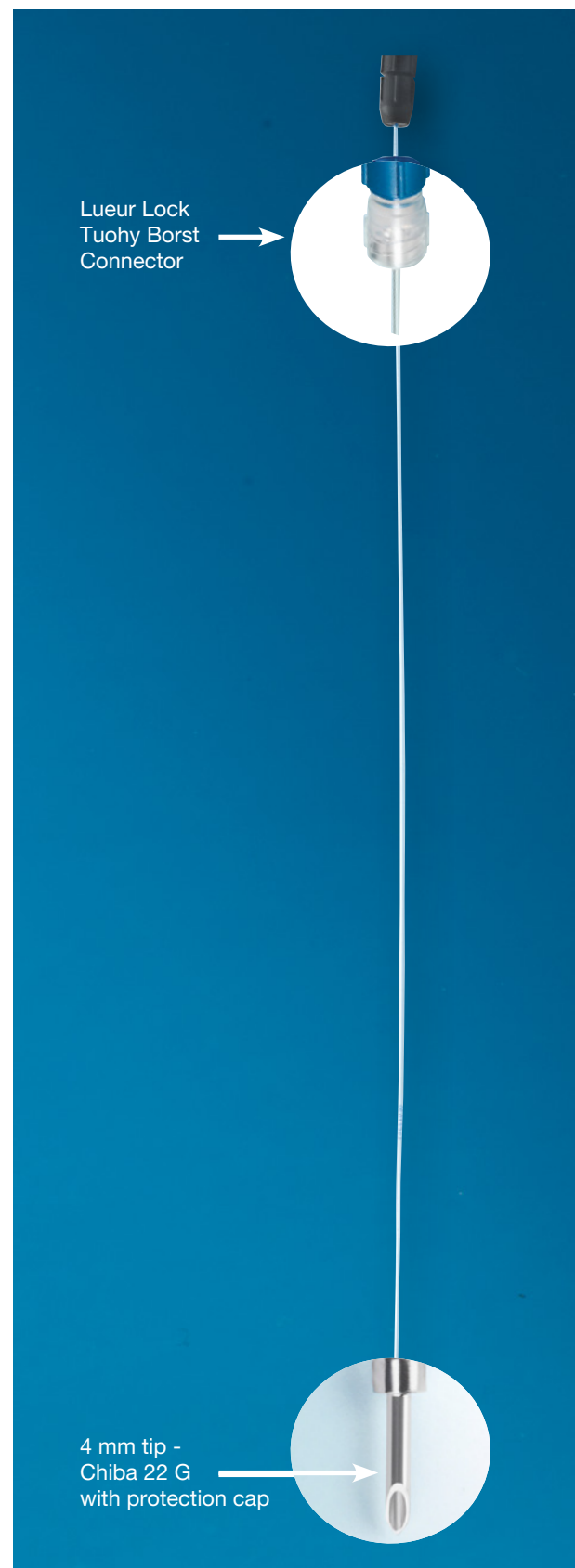


Catalog Number	Description
NBI035	35 cm, use with rigid cystoscope.
NBI070	70 cm, use with flexible or rigid cystoscope.

Individually packed - Sterile Ethylene Oxide (EO).
Minimum order of 5.

Ordering information:

Contact Customer Service at 800-258-3476
and ask to speak to a Surgical Urology
Customer Service representative.



Ostomy Care
Urology & Continence Care
Wound & Skin Care

Coloplast develops products and services that make life easier for people with very personal and private medical conditions. Working closely with the people who use our products, we create solutions that are sensitive to their special needs. We call this intimate healthcare. Our business includes ostomy care, urology and continence care and wound and skin care. We operate globally and employ more than 7,000 people.
The Coloplast logo and BoNee are registered trademarks of Coloplast A/S. © 2011.
All rights reserved. Coloplast Corp., Minneapolis, MN USA.



Coloplast Corp.
Minneapolis, MN 55411
1.800.258.3476
usmedweb@coloplast.com
www.us.coloplast.com

M2012N 11.11